

For Research Use Only

DUPD1 / DUSP27 Polyclonal antibody, PBS Only

Catalog Number: 25259-1-PBS



Basic Information

Catalog Number:

25259-1-PBS

Size:

100ug, Concentration: 1 mg/ml by
Nanodrop;

Source:

Rabbit

Isotype:

IgG

Immunogen Catalog Number:

AG19658

GenBank Accession Number:

BC137322

GeneID (NCBI):

338599

UNIPROT ID:

Q68J44

Full Name:

dual specificity phosphatase and pro
isomerase domain containing 1

Calculated MW:

220 aa, 25 kDa

Observed MW:

27 kDa

Purification Method:

Antigen affinity purification

Applications

Tested Applications:

WB, IHC, Indirect ELISA

Species Specificity:

human, mouse, rat

Background Information

Dupd1 also named as Dusp27, has been categorized as an atypical dual-specificity phosphatase (Dusp) capable of dephosphorylating both tyrosine and serine/threonine residues. It's involved in the modulation of intracellular signaling cascades. In skeletal muscle Dupd1 regulates systemic glucose homeostasis by activating AMPK, which is an energy sensor protein kinase. Dupd1 also affects MAP kinase signaling through modulation of the MAPK1/2 cascade in skeletal muscle promoting muscle cell differentiation, development and atrophy.

Storage

Storage:

Store at -80°C.

Storage Buffer:

PBS only, pH7.3

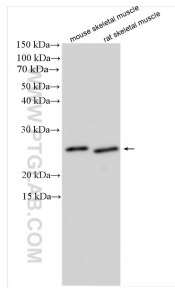
For technical support and original validation data for this product please contact:

T: 1 (888) 4PTGLAB (1-888-478-4522) (toll free
in USA), or 1(312) 455-8498 (outside USA)

E: proteintech@ptglab.com
W: ptglab.com

This product is exclusively available under Proteintech Group brand and is not available to purchase from any other manufacturer.

Selected Validation Data



Various lysates were subjected to SDS PAGE followed by western blot with 25259-1-AP (DUPD1 antibody) at dilution of 1:1000 incubated at room temperature for 1.5 hours. This data was developed using the same antibody clone with 25259-1-PBS in a different storage buffer formulation.

