

For Research Use Only

RNF123 Polyclonal antibody

Catalog Number: 25260-1-AP



Basic Information

Catalog Number:

25260-1-AP

Size:

150ul, Concentration: 450 ug/ml by Nanodrop;

Source:

Rabbit

Isotype:

IgG

Immunogen Catalog Number:

AG19653

GenBank Accession Number:

BC130632

GeneID (NCBI):

63891

UNIPROT ID:

Q5XPI4

Full Name:

ring finger protein 123

Calculated MW:

1314 aa, 149 kDa

Observed MW:

149 kDa

Purification Method:

Antigen affinity purification

Recommended Dilutions:

WB 1:2000-1:10000

IP 0.5-4.0 ug for 1.0-3.0 mg of total protein lysate

Applications

Tested Applications:

WB, IP, ELISA

Species Specificity:

human

Positive Controls:

WB : A549 cells, HEK-293 cells, HeLa cells, HuH-7 cells

IP : HeLa cells,

Background Information

RING finger protein 123 (RNF123), also known as KPC1, is an E3 ubiquitin ligase that belongs to the RING-finger family of ligases that contain a 40-60-amino acid long RING domain which is essential for causing substrate ubiquitination (PMID: 29676528). RNF123 promoted TLR3/IRF7-induced type I IFN signaling and inhibited viral replication by degrading SOCS1 (PMID: 37014223).

Storage

Storage:

Store at -20°C. Stable for one year after shipment.

Storage Buffer:

PBS with 0.02% sodium azide and 50% glycerol pH 7.3.

Aliquoting is unnecessary for -20°C storage

*** 20ul sizes contain 0.1% BSA

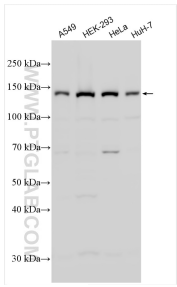
For technical support and original validation data for this product please contact:

T: 1 (888) 4PTGLAB (1-888-478-4522) (toll free in USA), or 1(312) 455-8498 (outside USA)

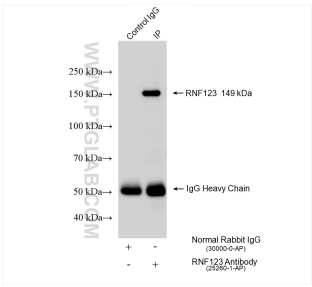
E: proteintech@ptglab.com
W: ptglab.com

This product is exclusively available under Proteintech Group brand and is not available to purchase from any other manufacturer.

Selected Validation Data



Various lysates were subjected to SDS PAGE followed by western blot with 25260-1-AP (RNF123 antibody) at dilution of 1:5000 incubated at room temperature for 1.5 hours.



IP result of anti-RNF123 (IP:25260-1-AP, 4ug; Detection:25260-1-AP 1:600) with HeLa cells lysate 1200 ug.