

For Research Use Only

# PHOX2B Polyclonal antibody

Catalog Number: 25276-1-AP

5 Publications



## Basic Information

### Catalog Number:

25276-1-AP

### Size:

150ul, Concentration: 900 ug/ml by Nanodrop and 360 ug/ml by Bradford method using BSA as the standard;

### Source:

Rabbit

### Isotype:

IgG

### Immunogen Catalog Number:

AG13196

### GenBank Accession Number:

BC017199

### GeneID (NCBI):

8929

### UNIPROT ID:

Q99453

### Full Name:

paired-like homeobox 2b

### Calculated MW:

31 kDa

### Observed MW:

31 kDa

### Purification Method:

Antigen affinity purification

### Recommended Dilutions:

WB 1:500-1:2000

IHC 1:50-1:500

IF/ICC 1:200-1:800

## Applications

### Tested Applications:

WB, IHC, IF/ICC, ELISA

### Cited Applications:

WB, IHC, IF

### Species Specificity:

human, mouse

### Cited Species:

human, mouse, rat

**Note-IHC: suggested antigen retrieval with TE buffer pH 9.0; (\*) Alternatively, antigen retrieval may be performed with citrate buffer pH 6.0**

### Positive Controls:

WB : Neuro-2a cells, SH-SY5Y cells

IHC : neuroblastoma tissue, mouse brain tissue

IF/ICC : SH-SY5Y cells,

## Background Information

Paired mesoderm homeobox protein 2B (PHOX2B), also named as Neuroblastoma Phox, is a 314 amino acid protein, which contains one homeobox DNA-binding domain and belongs to the paired homeobox family. PHOX2B localizes in the nucleus and is expressed in neuroblastoma, brain and adrenal gland. PHOX2B plays a role in the development of several major noradrenergic neuron populations, including the locus coeruleus. PHOX2B has an association with congenital central hypoventilation syndrome.

## Notable Publications

Author	Pubmed ID	Journal	Application
Ling Ma	35325230	Stem Cells Transl Med	WB
Yuzo Takayama	32528170	Sci Rep	IF
Miller Huang	26812940	Sci Rep	IF

## Storage

### Storage:

Store at -20°C. Stable for one year after shipment.

### Storage Buffer:

PBS with 0.02% sodium azide and 50% glycerol pH 7.3.

Aliquoting is unnecessary for -20°C storage

\*\*\* 20ul sizes contain 0.1% BSA

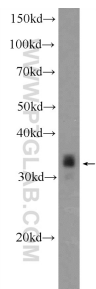
For technical support and original validation data for this product please contact:

T: 1 (888) 4PTGLAB (1-888-478-4522) (toll free in USA), or 1(312) 455-8498 (outside USA)

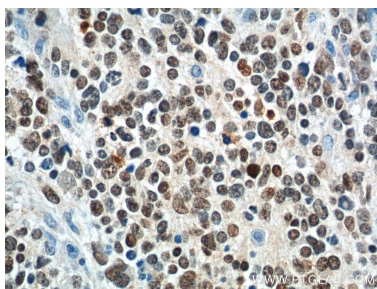
E: [proteintech@ptglab.com](mailto:proteintech@ptglab.com)  
W: [ptglab.com](http://ptglab.com)

This product is exclusively available under Proteintech Group brand and is not available to purchase from any other manufacturer.

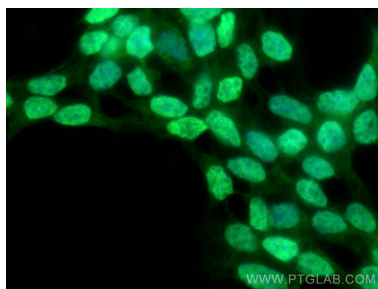
Selected Validation Data



Neuro-2a cells were subjected to SDS PAGE followed by western blot with 25276-1-AP (PHOX2B Antibody) at dilution of 1:1000 incubated at room temperature for 1.5 hours.



Immunohistochemical analysis of paraffin-embedded neuroblastoma tissue slide using 25276-1-AP (PHOX2B Antibody) at dilution of 1:200 (under 40x Lens).



Immunofluorescent analysis of (4% PFA) fixed SH-SY5Y cells using PHOX2B antibody (25276-1-AP) at dilution of 1:400 and CoraLite®488-Conjugated AffiniPure Goat Anti-Rabbit IgG(H+L) (SA00013-2).