

For Research Use Only

# Integrin Beta 4 Polyclonal antibody

Catalog Number: 25277-1-AP

2 Publications



## Basic Information

<b>Catalog Number:</b> 25277-1-AP	<b>GenBank Accession Number:</b> BC126411	<b>Purification Method:</b> Antigen affinity purification
<b>Size:</b> 150ul, Concentration: 600 ug/ml by Nanodrop and 333 ug/ml by Bradford method using BSA as the standard;	<b>GeneID (NCBI):</b> 3691	<b>Recommended Dilutions:</b> WB 1:1000-1:6000
<b>Source:</b> Rabbit	<b>UNIPROT ID:</b> P16144	<b>IHC 1:50-1:500</b>
<b>Isotype:</b> IgG	<b>Full Name:</b> integrin, beta 4	<b>IF/ICC 1:200-1:800</b>
<b>Immunogen Catalog Number:</b> AG16460	<b>Calculated MW:</b> 1752 aa, 195 kDa	
	<b>Observed MW:</b> 200 kDa	

## Applications

<b>Tested Applications:</b> WB, IHC, IF/ICC, ELISA	<b>Positive Controls:</b>
<b>Cited Applications:</b> WB, IF	<b>WB :</b> BxPC-3 cells, mouse pancreas tissue, rat skin tissue
<b>Species Specificity:</b> human, mouse, rat	<b>IHC :</b> human breast cancer tissue, human pancreas cancer tissue
<b>Cited Species:</b> human, mouse	<b>IF/ICC :</b> A431 cells,
<b>Note-IHC: suggested antigen retrieval with TE buffer pH 9.0; (*) Alternatively, antigen retrieval may be performed with citrate buffer pH 6.0</b>	

## Background Information

Integrins are cell adhesion receptors that are heterodimers composed of non-covalently associated alpha and beta subunits. Integrin beta-4 is predominantly expressed in squamous epithelial cells, endothelial cells, immature thymocytes, Schwann cells, and fibroblasts of the peripheral nervous system (PMID: 28084395). Integrin beta-4 pairs with alpha-6, and the heterodimeric integrin alpha-6/beta-4 is a receptor for laminin. Integrin alpha-6/beta-4 plays a critical structural role in the hemidesmosome of epithelial cells, and also plays a role in the invasive and metastatic phenotype of various cancers.

## Notable Publications

Author	Pubmed ID	Journal	Application
Gabriel T Kelly	32736699	Biochem Biophys Res Commun	WB
Shoma Yamamori	39637939	J Oral Biosci	IF

## Storage

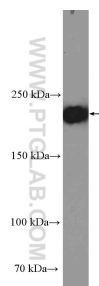
**Storage:**  
Store at -20°C. Stable for one year after shipment.  
**Storage Buffer:**  
PBS with 0.02% sodium azide and 50% glycerol pH 7.3.  
**Aliquoting is unnecessary for -20°C storage**

\*\*\* 20ul sizes contain 0.1% BSA

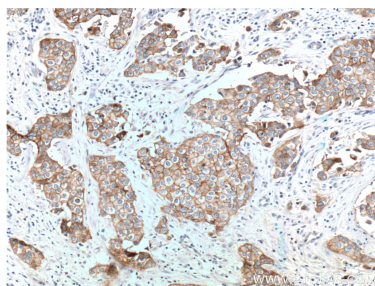
For technical support and original validation data for this product please contact:  
T: 1 (888) 4PTGLAB (1-888-478-4522) (toll free in USA), or 1(312) 455-8498 (outside USA)  
E: [proteintech@ptglab.com](mailto:proteintech@ptglab.com)  
W: [ptglab.com](http://ptglab.com)

This product is exclusively available under Proteintech Group brand and is not available to purchase from any other manufacturer.

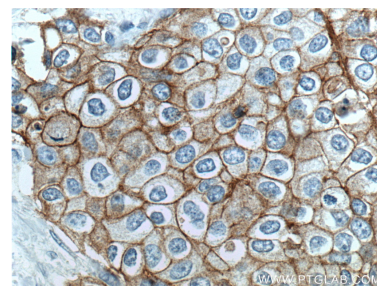
## Selected Validation Data



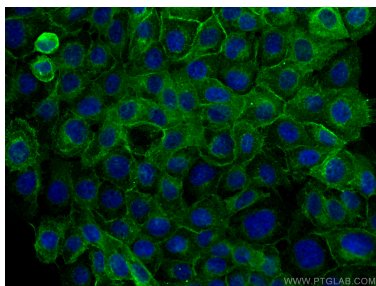
BxPC-3 cells were subjected to SDS PAGE followed by western blot with 25277-1-AP (ITGB4 Antibody) at dilution of 1:3000 incubated at room temperature for 1.5 hours.



Immunohistochemical analysis of paraffin-embedded human breast cancer tissue slide using 25277-1-AP (ITGB4 Antibody) at dilution of 1:200 (under 10x lens).



Immunohistochemical analysis of paraffin-embedded human breast cancer tissue slide using 25277-1-AP (ITGB4 Antibody) at dilution of 1:200 (under 40x lens).



Immunofluorescent analysis of (4% PFA) fixed A431 cells using Integrin Beta 4 antibody (25277-1-AP) at dilution of 1:400 and CoraLite®488-Conjugated Goat Anti-Rabbit IgG(H+L).