

For Research Use Only

TRAPPC2L Polyclonal antibody

Catalog Number: 25282-1-AP



Basic Information

Catalog Number: 25282-1-AP	GenBank Accession Number: BC105809	Purification Method: Antigen affinity purification
Size: 150ul, Concentration: 450 µg/ml by Nanodrop and 293 µg/ml by Bradford method using BSA as the standard;	GeneID (NCBI): 51693	Recommended Dilutions: WB 1:500-1:1000 IHC 1:20-1:200 IF 1:20-1:200
Source: Rabbit	Full Name: trafficking protein particle complex 2-like	
Isotype: IgG	Calculated MW: 140 aa, 16 kDa	
Immunogen Catalog Number: AG16890	Observed MW: 20 kDa	

Applications

Tested Applications:

IF, IHC, WB, ELISA

Species Specificity:

human, mouse

Note-IHC: suggested antigen retrieval with TE buffer pH 9.0; (*) Alternatively, antigen retrieval may be performed with citrate buffer pH 6.0

Positive Controls:

WB : HEK-293 cells, U-251 cells, NIH/3T3 cells

IHC : human kidney tissue,

IF : HepG2 cells,

Background Information

Storage

Storage:

Store at -20°C. Stable for one year after shipment.

Storage Buffer:

PBS with 0.02% sodium azide and 50% glycerol pH 7.3.

Aliquoting is unnecessary for -20°C storage

*** 20ul sizes contain 0.1% BSA

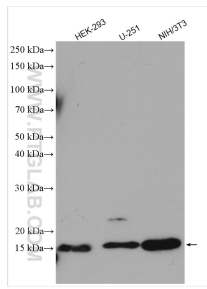
For technical support and original validation data for this product please contact:

T: 1 (888) 4PTGLAB (1-888-478-4522) (toll free in USA), or 1(312) 455-8498 (outside USA)

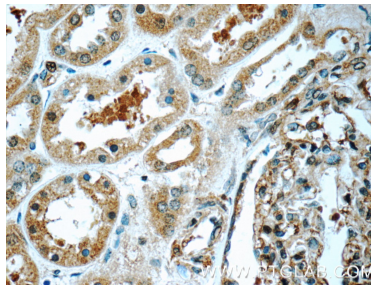
E: proteintech@ptglab.com
W: ptglab.com

This product is exclusively available under Proteintech Group brand and is not available to purchase from any other manufacturer.

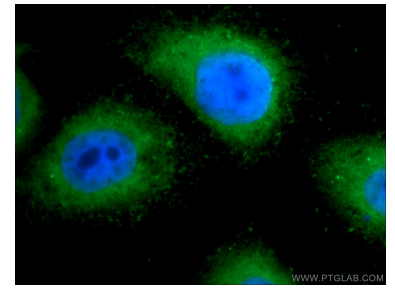
Selected Validation Data



Various lysates were subjected to SDS PAGE followed by western blot with 25282-1-AP (TRAPPC2L antibody) at dilution of 1:500 incubated at room temperature for 1.5 hours.



Immunohistochemical analysis of paraffin-embedded human kidney tissue slide using 25282-1-AP (TRAPPC2L Antibody) at dilution of 1:50 (under 40x lens).



Immunofluorescent analysis of HepG2 cells using 25282-1-AP (TRAPPC2L antibody) at dilution of 1:50 and Alexa Fluor 488-conjugated AffiniPure Goat Anti-Rabbit IgG(H+L).