

For Research Use Only

C8A Polyclonal antibody

Catalog Number: 25289-1-AP



Basic Information

Catalog Number:

25289-1-AP

Size:

150ul, Concentration: 650 ug/ml by Nanodrop and 287 ug/ml by Bradford method using BSA as the standard;

Source:

Rabbit

Isotype:

IgG

Immunogen Catalog Number:

AG18389

GenBank Accession Number:

BC132913

GeneID (NCBI):

731

UNIPROT ID:

P07357

Full Name:

complement component 8, alpha polypeptide

Calculated MW:

584 aa, 65 kDa

Observed MW:

65-70 kDa

Purification Method:

Antigen affinity purification

Recommended Dilutions:

WB 1:1000-1:8000

Applications

Tested Applications:

WB, ELISA

Species Specificity:

human

Positive Controls:

WB : human plasma,

Background Information

C8 is a component of the complement system and contains three polypeptides, alpha, beta and gamma. Complement component C8 alpha chain (C8A) is a constituent of the membrane attack complex (MAC) that plays a key role in the innate and adaptive immune response by forming pores in the plasma membrane of target cells. C8A inserts into the target membrane, but does not form pores by itself. Mutations in the C8A gene cause complement C8 alpha-gamma deficiency.

Storage

Storage:

Store at -20°C. Stable for one year after shipment.

Storage Buffer:

PBS with 0.02% sodium azide and 50% glycerol pH 7.3.

Aliquoting is unnecessary for -20°C storage

*** 20ul sizes contain 0.1% BSA

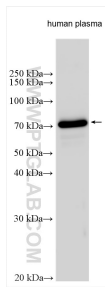
For technical support and original validation data for this product please contact:

T: 1 (888) 4PTGLAB (1-888-478-4522) (toll free in USA), or 1(312) 455-8498 (outside USA)

E: proteintech@ptglab.com
W: ptglab.com

This product is exclusively available under Proteintech Group brand and is not available to purchase from any other manufacturer.

Selected Validation Data



Human plasma were subjected to SDS PAGE followed by western blot with 25289-1-AP (C8A antibody) at dilution of 1:4000 incubated at room temperature for 1.5 hours.