

For Research Use Only

# PDE3B Polyclonal antibody

Catalog Number: 25290-1-AP **1 Publications**



## Basic Information

**Catalog Number:**  
25290-1-AP

**Size:**  
150ul, Concentration: 550 µg/ml by Nanodrop and 307 µg/ml by Bradford method using BSA as the standard;

**Source:**  
Rabbit

**Isotype:**  
IgG

**Immunogen Catalog Number:**  
AG18064

**GenBank Accession Number:**  
BC136565

**GeneID (NCBI):**  
5140

**Full Name:**  
phosphodiesterase 3B, cGMP-inhibited

**Calculated MW:**  
1112 aa, 124 kDa

**Observed MW:**  
124 kDa

**Purification Method:**  
Antigen affinity purification

**Recommended Dilutions:**  
WB 1:500-1:2000  
IP 0.5-4.0 ug for IP and 1:200-1:1000 for WB

## Applications

**Tested Applications:**  
IP, WB, ELISA

**Cited Applications:**  
WB

**Species Specificity:**  
human

**Cited Species:**  
human, mouse

**Positive Controls:**

**WB:** HL-60 cells, HeLa cells

**IP:** HeLa cells,

## Background Information

### Notable Publications

Author	Pubmed ID	Journal	Application
Ning Liu	36675205	Int J Mol Sci	WB

## Storage

**Storage:**

Store at -20°C. Stable for one year after shipment.

**Storage Buffer:**

PBS with 0.02% sodium azide and 50% glycerol pH 7.3.

Aliquoting is unnecessary for -20°C storage

**\*\*\* 20ul sizes contain 0.1% BSA**

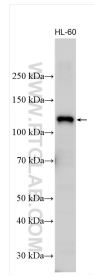
For technical support and original validation data for this product please contact:

T: 1 (888) 4PTGLAB (1-888-478-4522) (toll free in USA), or 1(312) 455-8498 (outside USA)

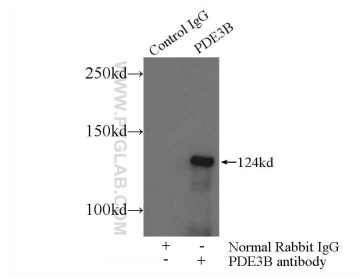
E: proteintech@ptglab.com  
W: ptglab.com

**This product is exclusively available under Proteintech Group brand and is not available to purchase from any other manufacturer.**

## Selected Validation Data



HL-60 cells were subjected to SDS PAGE followed by western blot with 25290-1-AP (PDE3B antibody) at dilution of 1:1000 incubated at room temperature for 1.5 hours.



IP Result of anti-PDE3B (IP:25290-1-AP, 5ug; Detection:25290-1-AP 1:300) with HeLa cells lysate 800ug.