

For Research Use Only

CWC15 Polyclonal antibody

Catalog Number: 25293-1-AP **1 Publications**



Basic Information

Catalog Number: 25293-1-AP	GenBank Accession Number: BC040946	Purification Method: Antigen affinity purification
Size: 150ul, Concentration: 600 µg/ml by Nanodrop and 267 µg/ml by Bradford method using BSA as the standard;	GeneID (NCBI): 51503	Recommended Dilutions: WB 1:500-1:1000 IP 0.5-4.0 ug for IP and 1:500-1:1000 for WB
Source: Rabbit	Full Name: CWC15 spliceosome-associated protein homolog (S. cerevisiae)	IHC 1:20-1:200 IF 1:50-1:500
Isotype: IgG	Calculated MW: 229 aa, 27 kDa	
Immunogen Catalog Number: AG18116	Observed MW: 27-35 kDa	

Applications

Tested Applications: IF, IHC, IP, WB, ELISA	Positive Controls:
Cited Applications: WB	WB: mouse liver tissue, HeLa cells, HepG2 cells, Jurkat cells, mouse heart tissue, mouse testis tissue, PC-3 cells, SW 1990 cells
Species Specificity: human, mouse	IP: HeLa cells,
Note-IHC: <i>suggested antigen retrieval with TE buffer pH 9.0; (*) Alternatively, antigen retrieval may be performed with citrate buffer pH 6.0</i>	IHC: human stomach tissue, human breast cancer tissue
	IF: HeLa cells,

Background Information

CWC15, also named as C11orf5 or Spliceosome-associated protein CWC15 homolog, is a 229 amino acid protein, which belongs to the CWC15 family. CWC15 as a Component of the PRP19-CDC5L complex that forms an integral part of the spliceosome and is required for activating pre-mRNA splicing.

Notable Publications

Author	Pubmed ID	Journal	Application
Febe van Maldegem	26130721	Nucleic Acids Res	WB

Storage

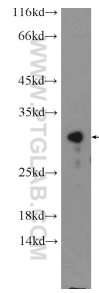
Storage:
Store at -20°C. Stable for one year after shipment.
Storage Buffer:
PBS with 0.02% sodium azide and 50% glycerol pH 7.3.
Aliquoting is unnecessary for -20°C storage

*** 20ul sizes contain 0.1% BSA

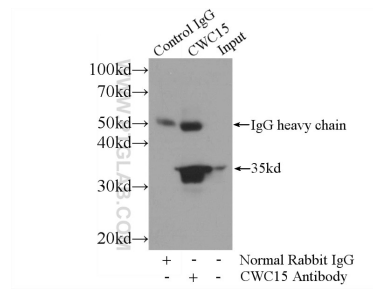
For technical support and original validation data for this product please contact:
T: 1 (888) 4PTGLAB (1-888-478-4522) (toll free in USA), or 1(312) 455-8498 (outside USA)
E: proteintech@ptglab.com
W: ptglab.com

This product is exclusively available under Proteintech Group brand and is not available to purchase from any other manufacturer.

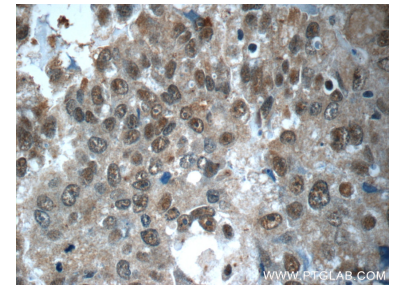
Selected Validation Data



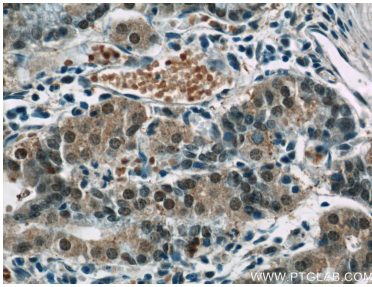
mouse liver tissue were subjected to SDS PAGE followed by western blot with 25293-1-AP (CWC15 Antibody) at dilution of 1:600 incubated at room temperature for 1.5 hours.



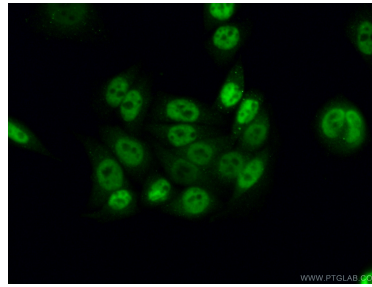
IP Result of anti-CWC15 (IP:25293-1-AP, 3ug; Detection:25293-1-AP 1:600) with HeLa cells lysate 2800ug.



Immunohistochemical analysis of paraffin-embedded human breast cancer tissue slide using 25293-1-AP (CWC15 Antibody) at dilution of 1:50 (under 40x lens).



Immunohistochemical analysis of paraffin-embedded human stomach tissue slide using 25293-1-AP (CWC15 Antibody) at dilution of 1:50 (under 40x lens).



Immunofluorescent analysis of (4% PFA) fixed HeLa cells using 25293-1-AP (CWC15 antibody) at dilution of 1:50 and Alexa Fluor 488-conjugated AffiniPure Goat Anti-Rabbit IgG(H+L).