

For Research Use Only

# Claudin 23 Polyclonal antibody

Catalog Number: 25296-1-AP

2 Publications



## Basic Information

### Catalog Number:

25296-1-AP

### Size:

150ul, Concentration: 500 ug/ml by Nanodrop and 373 ug/ml by Bradford method using BSA as the standard;

### Source:

Rabbit

### Isotype:

IgG

### Immunogen Catalog Number:

AG18189

### GenBank Accession Number:

BC125148

### GeneID (NCBI):

137075

### UNIPROT ID:

Q96B33

### Full Name:

claudin 23

### Calculated MW:

292 aa, 32 kDa

### Observed MW:

32 kDa

### Purification Method:

Antigen affinity purification

### Recommended Dilutions:

WB 1:500-1:1000

IHC 1:20-1:200

## Applications

### Tested Applications:

WB, IHC, ELISA

### Cited Applications:

WB, IF

### Species Specificity:

human

### Cited Species:

human, canine

### Positive Controls:

WB : COLO 320 cells,

IHC : human colon cancer tissue,

**Note-IHC: suggested antigen retrieval with TE buffer pH 9.0; (\*) Alternatively, antigen retrieval may be performed with citrate buffer pH 6.0**

## Background Information

Claudin 23 (CLDN23) belongs to the large claudin family of proteins, which are tetraspan transmembrane proteins of tight junctions (PMID: 12736707; 18036336). Claudins exhibit specific patterns of expression in different tissues. Human CLDN23 mRNA was expressed in germinal center B cells, placenta, stomach as well as in colon tumor (PMID: 12736707). CLDN23 has been reported as a candidate tumor suppressor gene implicated in intestinal-type gastric cancer (PMID: 12736707).

## Notable Publications

Author	Pubmed ID	Journal	Application
Bei Liu	39579764	Cell	WB
Wenxi Xu	37467886	Life Sci	WB,IF

## Storage

### Storage:

Store at -20°C. Stable for one year after shipment.

### Storage Buffer:

PBS with 0.02% sodium azide and 50% glycerol pH 7.3.

Aliquoting is unnecessary for -20°C storage

\*\*\* 20ul sizes contain 0.1% BSA

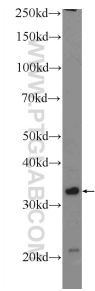
For technical support and original validation data for this product please contact:

T: 1 (888) 4PTGLAB (1-888-478-4522) (toll free in USA), or 1(312) 455-8498 (outside USA)

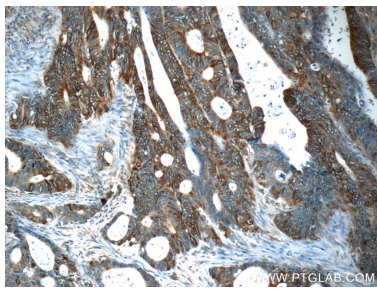
E: [proteintech@ptglab.com](mailto:proteintech@ptglab.com)  
W: [ptglab.com](http://ptglab.com)

This product is exclusively available under Proteintech Group brand and is not available to purchase from any other manufacturer.

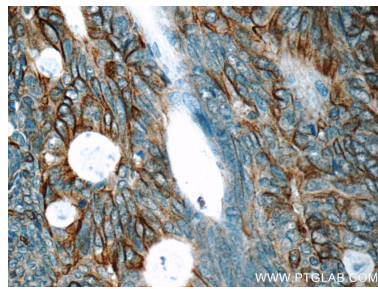
Selected Validation Data



COLO 320 cells were subjected to SDS PAGE followed by western blot with 25296-1-AP (Claudin 23 antibody at dilution of 1:600 incubated at room temperature for 1.5 hours.



Immunohistochemical analysis of paraffin-embedded human colon cancer tissue slide using 25296-1-AP (Claudin 23 antibody at dilution of 1:50 (under 10x lens).



Immunohistochemical analysis of paraffin-embedded human colon cancer tissue slide using 25296-1-AP (Claudin 23 antibody at dilution of 1:50 (under 40x lens).