

For Research Use Only

RBM25 Polyclonal antibody

Catalog Number: 25297-1-AP

5 Publications



Basic Information

Catalog Number:

25297-1-AP

Size:

150ul, Concentration: 300 ug/ml by Nanodrop;

Source:

Rabbit

Isotype:

IgG

Immunogen Catalog Number:

AG18244

GenBank Accession Number:

BC113389

GeneID (NCBI):

58517

UNIPROT ID:

P49756

Full Name:

RNA binding motif protein 25

Calculated MW:

843 aa, 100 kDa

Observed MW:

110-120 kDa

Purification Method:

Antigen affinity purification

Recommended Dilutions:

WB 1:1000-1:4000

IP 0.5-4.0 ug for 1.0-3.0 mg of total protein lysate

IHC 1:20-1:200

IF/ICC 1:200-1:800

Applications

Tested Applications:

WB, IHC, IF/ICC, IP, ELISA

Cited Applications:

WB, IHC, IP, RIP

Species Specificity:

human, mouse

Cited Species:

human, mouse, rat

Positive Controls:

WB : HEK-293 cells, HeLa cells, Jurkat cells, mouse brain tissue

IP : HEK-293 cells,

IHC : human breast cancer tissue, human cervical cancer tissue

IF/ICC : HeLa cells,

Note-IHC: suggested antigen retrieval with TE buffer pH 9.0; (*) Alternatively, antigen retrieval may be performed with citrate buffer pH 6.0

Background Information

RNA-binding protein 25 (RBM25), also named as Protein S164 or RNPC7, is a 843 amino acid protein, which contains one RRM domain and one PWI domain. RBM25 localizes in the nucleus and cytoplasm. RBM25 acts as a regulator of alternative pre-mRNA splicing and is involved in apoptotic cell death through the regulation of the apoptotic factor BCL2L1 isoform expression.

Notable Publications

Author	Pubmed ID	Journal	Application
Wenji Lin	39284557	Gene	WB
Lili Zhi	39110401	Sci China Life Sci	WB,IHC
Xiaqing Zhang	38590928	Cell Insight	WB,IP

Storage

Storage:

Store at -20°C. Stable for one year after shipment.

Storage Buffer:

PBS with 0.02% sodium azide and 50% glycerol pH 7.3.

Aliquoting is unnecessary for -20°C storage

*** 20ul sizes contain 0.1% BSA

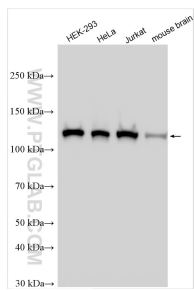
For technical support and original validation data for this product please contact:

T: 1 (888) 4PTGLAB (1-888-478-4522) (toll free in USA), or 1(312) 455-8498 (outside USA)

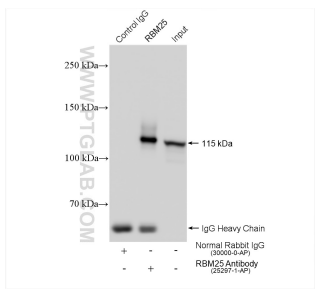
E: proteintech@ptglab.com
W: ptglab.com

This product is exclusively available under Proteintech Group brand and is not available to purchase from any other manufacturer.

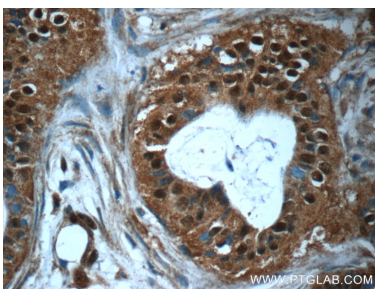
Selected Validation Data



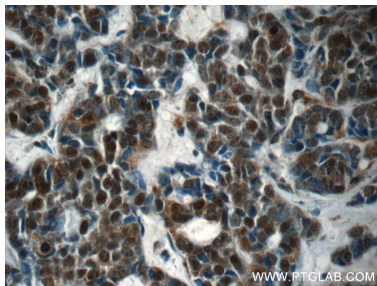
Various lysates were subjected to SDS PAGE followed by western blot with 25297-1-AP (RBM25 antibody) at dilution of 1:2000 incubated at room temperature for 1.5 hours.



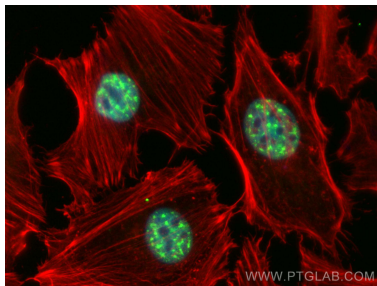
IP result of anti-RBM25 (IP:25297-1-AP, 4ug; Detection:25297-1-AP 1:1000) with HEK-293 cells lysate 1400 ug.



Immunohistochemical analysis of paraffin-embedded human breast cancer tissue slide using 25297-1-AP (RBM25 Antibody) at dilution of 1:50 (under 40x lens).



Immunohistochemical analysis of paraffin-embedded human cervical cancer tissue slide using 25297-1-AP (RBM25 Antibody) at dilution of 1:50 (under 40x lens).



Immunofluorescent analysis of (4% PFA) fixed HeLa cells using RBM25 antibody (25297-1-AP) at dilution of 1:400 and Coralite®488-Conjugated Goat Anti-Rabbit IgG(H+L), CL594-phalloidin (red).