

For Research Use Only

CHD3 Polyclonal antibody

Catalog Number: 25335-1-AP



Basic Information

Catalog Number: 25335-1-AP	GenBank Accession Number: NM_005852	Purification Method: Antigen affinity purification
Size: 150ul , Concentration: 900 µg/ml by Nanodrop;	GeneID (NCBI): 1107	Recommended Dilutions: WB 1:500-1:2000 IHC 1:50-1:500 IF 1:50-1:500
Source: Rabbit	Full Name: chromodomain helicase DNA binding protein 3	
Isotype: IgG	Calculated MW: 227 kDa	
	Observed MW: 240 kDa	

Applications

Tested Applications: IF, IHC, WB, ELISA	Positive Controls: WB : MCF-7 cells, HEK-293 cells IHC : mouse brain tissue, human colon tissue IF : HeLa cells,
Species Specificity: human, mouse	
Note-IHC: suggested antigen retrieval with TE buffer pH 9.0; (*) Alternatively, antigen retrieval may be performed with citrate buffer pH 6.0	

Background Information

CHD3, also named as Mi2 ALPHA or Zinc finger helicase, is a 2000 amino acid protein, which contains one helicase C-terminal domain, one helicase ATP-binding domain, and two chromo domain. CHD3 localizes in the nucleus and cytoplasm. CHD3 is widely expressed. CHD3 is a component of the histone deacetylase NuRD complex, which participates in the remodeling of chromatin by deacetylating histones. CHD3 is required for anchoring centrosomal pericentric in both interphase and mitosis.

Storage

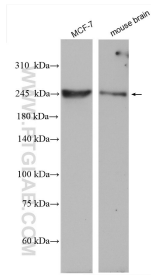
Storage:
Store at -20°C. Stable for one year after shipment.
Storage Buffer:
PBS with 0.02% sodium azide and 50% glycerol pH 7.3.
Aliquoting is unnecessary for -20°C storage

*** 20ul sizes contain 0.1% BSA

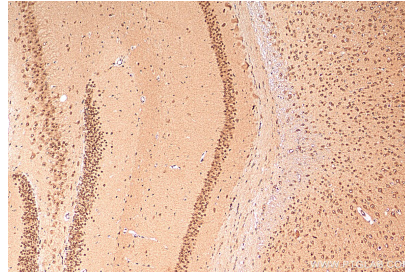
For technical support and original validation data for this product please contact:
T: 1 (888) 4PTGLAB (1-888-478-4522) (toll free in USA), or 1(312) 455-8498 (outside USA)
E: proteintech@ptglab.com
W: ptglab.com

This product is exclusively available under Proteintech Group brand and is not available to purchase from any other manufacturer.

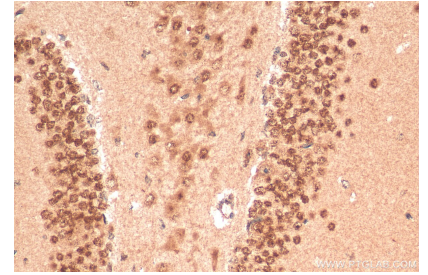
Selected Validation Data



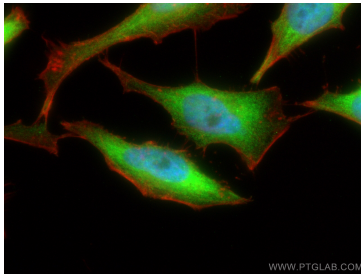
MCF-7 cells were subjected to SDS PAGE followed by western blot with 25335-1-AP (CHD3 antibody) at dilution of 1:1000 incubated at room temperature for 1.5 hours.



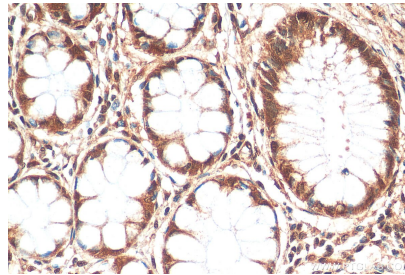
Immunohistochemical analysis of paraffin-embedded mouse brain tissue slide using 25335-1-AP (CHD3 antibody) at dilution of 1:200 (under 10x lens). Heat mediated antigen retrieval with Tris-EDTA buffer (pH 9.0).



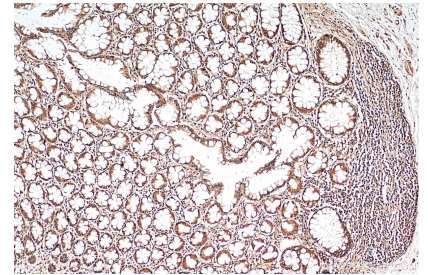
Immunohistochemical analysis of paraffin-embedded mouse brain tissue slide using 25335-1-AP (CHD3 antibody) at dilution of 1:200 (under 40x lens). Heat mediated antigen retrieval with Tris-EDTA buffer (pH 9.0).



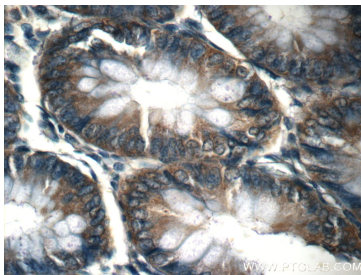
Immunofluorescent analysis of (4% PFA) fixed HeLa cells using CHD3 antibody (25335-1-AP) at dilution of 1:200 and CoralLite® 488-Conjugated AffiniPure Goat Anti-Rabbit IgG(H+L), CL594-phalloidin (red).



Immunohistochemical analysis of paraffin-embedded human colon tissue slide using 25335-1-AP (CHD3 antibody) at dilution of 1:200 (under 40x lens). Heat mediated antigen retrieval with Tris-EDTA buffer (pH 9.0).



Immunohistochemical analysis of paraffin-embedded human colon tissue slide using 25335-1-AP (CHD3 antibody) at dilution of 1:200 (under 10x lens). Heat mediated antigen retrieval with Tris-EDTA buffer (pH 9.0).



Immunohistochemical analysis of paraffin-embedded human colon tissue slide using 25335-1-AP (CHD3 Antibody) at dilution of 1:50 (under 40x lens).