

For Research Use Only

RTEL1 Polyclonal antibody

Catalog Number: 25337-1-AP **1 Publications**



Basic Information

Catalog Number:
25337-1-AP

Size:
150ul, Concentration: 450 µg/ml by Nanodrop and 353 µg/ml by Bradford method using BSA as the standard;

Source:
Rabbit

Isotype:
IgG

GenBank Accession Number:
NM_016434

GeneID (NCBI):
51750

Full Name:
regulator of telomere elongation helicase 1

Calculated MW:
142 kDa

Observed MW:
133 kDa

Purification Method:
Antigen affinity purification

Recommended Dilutions:
WB 1:500-1:1000
IP 0.5-4.0 ug for IP and 1:500-1:1000 for WB
IF 1:50-1:500

Applications

Tested Applications:
IF, IP, WB, ELISA

Cited Applications:
WB

Species Specificity:
human, mouse, rat

Cited Species:
zebrafish

Positive Controls:

WB: BGC-823 cells, C6 cells, HeLa cells, HepG2 cells, mouse brain tissue, mouse testis tissue, PC-3 cells

IP: mouse brain tissue,

IF: HepG2 cells,

Background Information

Notable Publications

Author	Pubmed ID	Journal	Application
Jingzhen Li	33476374	Nucleic Acids Res	WB

Storage

Storage:

Store at -20°C. Stable for one year after shipment.

Storage Buffer:

PBS with 0.02% sodium azide and 50% glycerol pH 7.3.

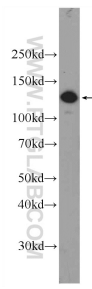
Aliquoting is unnecessary for -20°C storage

*** 20ul sizes contain 0.1% BSA

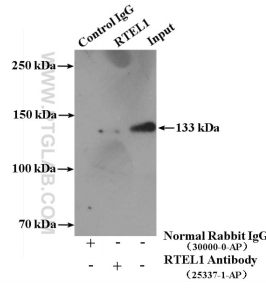
For technical support and original validation data for this product please contact:
T: 1 (888) 4PTGLAB (1-888-478-4522) (toll free in USA), or 1(312) 455-8498 (outside USA)
E: proteintech@ptglab.com
W: ptglab.com

This product is exclusively available under Proteintech Group brand and is not available to purchase from any other manufacturer.

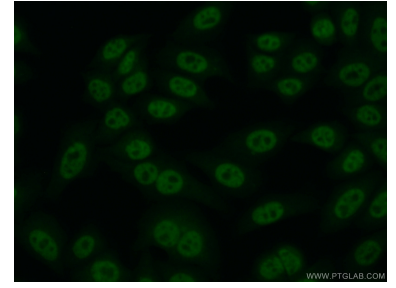
Selected Validation Data



BGC-823 cells were subjected to SDS PAGE followed by western blot with 25337-1-AP (RTEL1 Antibody) at dilution of 1:600 incubated at room temperature for 1.5 hours.



IP Result of anti-RTEL1 (IP:25337-1-AP, 4ug; Detection:25337-1-AP 1:500) with mouse brain tissue lysate 4000ug.



Immunofluorescent analysis of (10% Formaldehyde) fixed HepG2 cells using 25337-1-AP (RTEL1 antibody) at dilution of 1:50 and Alexa Fluor 488-conjugated AffiniPure Goat Anti-Rabbit IgG(H+L).