

For Research Use Only

GRM6 Polyclonal antibody

Catalog Number: 25338-1-AP



Basic Information

Catalog Number:

25338-1-AP

Size:

150ul , Concentration: 1000 ug/ml by Nanodrop;

Source:

Rabbit

Isotype:

IgG

GenBank Accession Number:

NM_000843

GeneID (NCBI):

2916

UNIPROT ID:

O15303

Full Name:

glutamate receptor, metabotropic 6

Calculated MW:

95 kDa

Observed MW:

50kDa, 100kDa

Purification Method:

Antigen affinity purification

Recommended Dilutions:

WB 1:500-1:1000

Applications

Tested Applications:

WB, ELISA

Species Specificity:

human, mouse, rat

Positive Controls:

WB : mouse retina tissue, rat brain tissue

Storage

Storage:

Store at -20°C. Stable for one year after shipment.

Storage Buffer:

PBS with 0.02% sodium azide and 50% glycerol pH 7.3.

Aliquoting is unnecessary for -20°C storage

***** 20ul sizes contain 0.1% BSA**

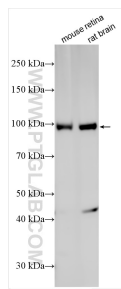
For technical support and original validation data for this product please contact:

T: 1 (888) 4PTGLAB (1-888-478-4522) (toll free in USA), or 1(312) 455-8498 (outside USA)

E: proteintech@ptglab.com
W: ptglab.com

This product is exclusively available under Proteintech Group brand and is not available to purchase from any other manufacturer.

Selected Validation Data



Various lysates were subjected to SDS PAGE followed by western blot with 25338-1-AP (GRM6 antibody) at dilution of 1:500 incubated at room temperature for 1.5 hours.