

For Research Use Only

# CPEB4 Polyclonal antibody

Catalog Number: 25342-1-AP

10 Publications



## Basic Information

Catalog Number:

25342-1-AP

Size:

150ul, Concentration: 1200 ug/ml by Nanodrop;

Source:

Rabbit

Isotype:

IgG

GenBank Accession Number:

NM\_030627

GeneID (NCBI):

80315

UNIPROT ID:

Q17RY0

Full Name:

cytoplasmic polyadenylation element binding protein 4

Calculated MW:

80 kDa

Observed MW:

80 kDa

Purification Method:

Antigen affinity purification

Recommended Dilutions:

WB 1:500-1:1000

IHC 1:50-1:500

IF/ICC 1:200-1:800

## Applications

Tested Applications:

WB, IHC, IF/ICC, ELISA

Cited Applications:

WB, IHC, RIP

Species Specificity:

human, mouse, rat

Cited Species:

human, mouse

**Note-IHC: suggested antigen retrieval with TE buffer pH 9.0; (\*) Alternatively, antigen retrieval may be performed with citrate buffer pH 6.0**

Positive Controls:

WB : SH-SY5Y cells, A375 cells, HeLa cells

IHC : human liver cancer tissue,

IF/ICC : SH-SY5Y cells,

## Background Information

CPEB4 also named as CPE binding protein 4 or hCPEB 4 is a 729 amino acid protein, which contains two RRM domains and belongs to the RRM CPEB family. CPEB4 involves in some forms of synaptic plasticity and regulate translation by binding to regulatory motifs of defined mRNA targets. CPEB1 and CPEB4 are differentially regulated by phase-specific kinases, generating the need of two sequential CPEB activities to sustain cytoplasmic polyadenylation during all the meiotic phases.

## Notable Publications

Author	Pubmed ID	Journal	Application
Kai P Hoefig	34471108	Nat Commun	WB
Rui Shi	35317822	J Transl Med	WB,IHC
Hui Zhang	35195181	Acta Cir Bras	WB

## Storage

Storage:

Store at -20°C. Stable for one year after shipment.

Storage Buffer:

PBS with 0.02% sodium azide and 50% glycerol pH 7.3.

Aliquoting is unnecessary for -20°C storage

\*\*\* 20ul sizes contain 0.1% BSA

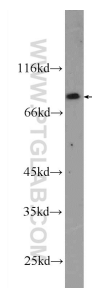
For technical support and original validation data for this product please contact:

T: 1 (888) 4PTGLAB (1-888-478-4522) (toll free in USA), or 1(312) 455-8498 (outside USA)

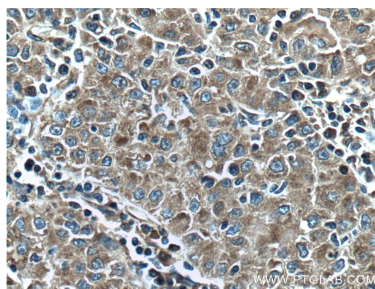
E: proteintech@ptglab.com  
W: ptglab.com

This product is exclusively available under Proteintech Group brand and is not available to purchase from any other manufacturer.

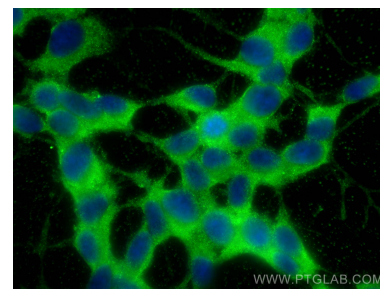
## Selected Validation Data



SH-SY5Y cells were subjected to SDS PAGE followed by western blot with 25342-1-AP (CPEB4 Antibody) at dilution of 1:600 incubated at room temperature for 1.5 hours.



Immunohistochemical analysis of paraffin-embedded human liver cancer tissue slide using 25342-1-AP (CPEB4 Antibody) at dilution of 1:200 (under 40x lens). Heat mediated antigen retrieval with Tris-EDTA buffer (pH 9.0).



Immunofluorescent analysis of (-20°C Ethanol) fixed SH-SY5Y cells using CPEB4 antibody (25342-1-AP) at dilution of 1:400 and CoraLite®488-Conjugated Goat Anti-Rabbit IgG(H+L) (SA00013-2).