

For Research Use Only

RSPO1 Polyclonal antibody

Catalog Number: 25348-1-AP

5 Publications



Basic Information

Catalog Number: 25348-1-AP	GenBank Accession Number: BC114966	Purification Method: Antigen affinity purification
Size: 150ul, Concentration: 900 ug/ml by Nanodrop and 366 ug/ml by Bradford method using BSA as the standard;	GeneID (NCBI): 284654	Recommended Dilutions: WB 1:1000-1:6000 IHC 1:500-1:2000
Source: Rabbit	UNIPROT ID: Q2MKA7	
Isotype: IgG	Full Name: R-spondin homolog (Xenopus laevis)	
Immunogen Catalog Number: AG21858	Calculated MW: 263 aa, 29 kDa	
	Observed MW: 29 kDa	

Applications

Tested Applications: WB, IHC, ELISA	Positive Controls: WB : human plasma, rat plasma IHC : human kidney tissue,
Cited Applications: WB, IF	
Species Specificity: human, rat	
Cited Species: human, mouse	
Note-IHC: suggested antigen retrieval with TE buffer pH 9.0; (*) Alternatively, antigen retrieval may be performed with citrate buffer pH 6.0	

Background Information

RSPO1, also named R-spondin-1, Activator of the canonical Wnt signaling pathway by acting as a ligand for LGR4-6 receptors. Acts as a ligand for frizzled FZD8 and LRP6. May negatively regulate the TGF-beta pathway. Has a essential role in ovary determination. Regulates Wnt signaling by antagonizing DKK1/KREM1-mediated internalization of LRP6 through an interaction with KREM1. RSPO1 seems to mainly localize to nucleoli (PMID:17804805).

Notable Publications

Author	Pubmed ID	Journal	Application
Almudena Chaves-Pérez	36098959	J Exp Med	WB,IF
Bhupesh Singla	32750106	Cardiovasc Res	WB
Chiung-Fang Chang	27314333	Int J Mol Sci	WB

Storage

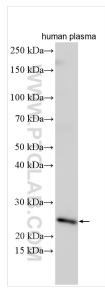
Storage:
Store at -20°C. Stable for one year after shipment.
Storage Buffer:
PBS with 0.02% sodium azide and 50% glycerol pH 7.3.
Aliquoting is unnecessary for -20°C storage

*** 20ul sizes contain 0.1% BSA

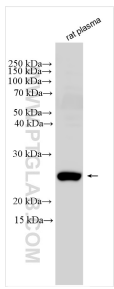
For technical support and original validation data for this product please contact:
T: 1 (888) 4PTGLAB (1-888-478-4522) (toll free in USA), or 1(312) 455-8498 (outside USA)
E: proteintech@ptglab.com
W: ptglab.com

This product is exclusively available under Proteintech Group brand and is not available to purchase from any other manufacturer.

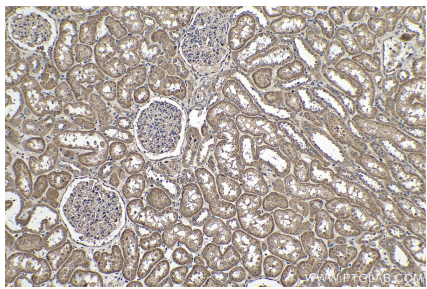
Selected Validation Data



human plasma were subjected to SDS PAGE followed by western blot with 25348-1-AP (RSPO1 antibody) at dilution of 1:3000 incubated at room temperature for 1.5 hours.



rat plasma were subjected to SDS PAGE followed by western blot with 25348-1-AP (RSPO1 antibody) at dilution of 1:1000 incubated at room temperature for 1.5 hours.



Immunohistochemical analysis of paraffin-embedded human kidney tissue slide using 25348-1-AP (RSPO1 antibody) at dilution of 1:1000 (under 10x lens). Heat mediated antigen retrieval with Tris-EDTA buffer (pH 9.0).