

For Research Use Only

SENP1 Polyclonal antibody

Catalog Number: 25349-1-AP

Featured Product

17 Publications



Basic Information

Catalog Number:

25349-1-AP

Size:

150ul, Concentration: 450 ug/ml by Nanodrop and 300 ug/ml by Bradford method using BSA as the standard;

Source:

Rabbit

Isotype:

IgG

Immunogen Catalog Number:

AG18028

GenBank Accession Number:

BC045639

GeneID (NCBI):

29843

Full Name:

SUMO1/sentrin specific peptidase 1

Calculated MW:

644 aa, 73 kDa

Observed MW:

73-74 kDa

Purification Method:

Antigen affinity purification

Recommended Dilutions:

WB 1:1000-1:8000

IP 0.5-4.0 ug for 1.0-3.0 mg of total protein lysate

IHC 1:500-1:2000

Applications

Tested Applications:

WB, IHC, IP, ELISA

Cited Applications:

WB, IHC, ColP

Species Specificity:

human, mouse, rat

Cited Species:

human, mouse, rat

Note-IHC: suggested antigen retrieval with TE buffer pH 9.0; (*) Alternatively, antigen retrieval may be performed with citrate buffer pH 6.0

Positive Controls:

WB : HL-60 cells, HeLa cells, HepG2 cells, Jurkat cells, mouse testis tissue, rat testis tissue

IP : Jurkat cells,

IHC : human ovary cancer tissue, human liver tissue, human ovary tissue, human testis tissue

Background Information

SENP1, Sentrin-specific protease 1, is a cysteine protease that specifically targets members of the small ubiquitin-like modifier (SUMO) protein family. SENP1 catalyzes two functions in the SUMO pathway (PMID: 29506078). The first is the hydrolysis of an alpha-linked peptide bond at the C-terminal end of the small ubiquitin-like modifier (SUMO) propeptides. The second is the deconjugation of SUMO1, SUMO2 and SUMO3 from targeted proteins (PMID: 16253240). SENP1 is located in the nucleus and cytosol.

Notable Publications

| Author | Pubmed ID | Journal | Application |
|---------------|-----------|-----------------|-------------|
| Fang Xianjun | 34049792 | J Pharmacol Sci | WB |
| Mingyue Zhou | 33686713 | Cancer Med | WB, IHC |
| Chunyang Wang | 30745829 | Int J Biol Sci | WB |

Storage

Storage:

Store at -20°C. Stable for one year after shipment.

Storage Buffer:

PBS with 0.02% sodium azide and 50% glycerol pH 7.3.

Aliquoting is unnecessary for -20°C storage

*** 20ul sizes contain 0.1% BSA

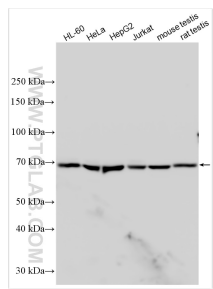
For technical support and original validation data for this product please contact:

T: 1 (888) 4PTGLAB (1-888-478-4522) (toll free in USA), or 1(312) 455-8498 (outside USA)

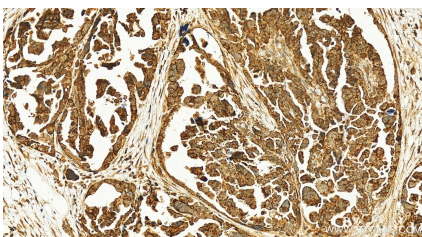
E: proteintech@ptglab.com
W: ptglab.com

This product is exclusively available under Proteintech Group brand and is not available to purchase from any other manufacturer.

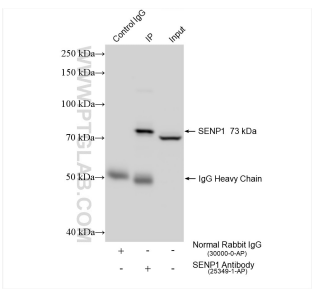
Selected Validation Data



Various lysates were subjected to SDS PAGE followed by western blot with 25349-1-AP (SENP1 antibody) at dilution of 1:4000 incubated at room temperature for 1.5 hours.



Immunohistochemical analysis of paraffin-embedded human ovarian cancer slide using 25349-1-AP (SENP1 antibody) at dilution of 1:1000 (under 20x lens). Heat mediated antigen retrieval with Tris-EDTA buffer (pH 9.0).



IP result of anti-SENP1 (IP:25349-1-AP, 4ug; Detection:25349-1-AP 1:1000) with Jurkat cells lysate 1400 ug.