

For Research Use Only

# TTC30A Polyclonal antibody

Catalog Number: 25352-1-AP

Featured Product

2 Publications



## Basic Information

**Catalog Number:**  
25352-1-AP

**Size:**  
150ul, Concentration: 800 µg/ml by Nanodrop and 400 µg/ml by Bradford method using BSA as the standard;

**Source:**  
Rabbit

**Isotype:**  
IgG

**Immunogen Catalog Number:**  
AG18361

**GenBank Accession Number:**  
BC042848

**GeneID (NCBI):**  
92104

**Full Name:**  
tetra-tricopeptide repeat domain 30A

**Calculated MW:**  
665 aa, 76 kDa

**Observed MW:**  
72-76 kDa

**Purification Method:**  
Antigen affinity purification

**Recommended Dilutions:**  
WB 1:500-1:2000  
IP 0.5-4.0 µg for IP and 1:500-1:1000 for WB  
IF 1:200-1:800

## Applications

**Tested Applications:**  
IF, IP, WB, ELISA

**Cited Applications:**  
IF, WB

**Species Specificity:**  
human, mouse, rat

**Cited Species:**  
human

**Positive Controls:**

**WB:** A431 cells, HEK-293 cells, mouse testis, rat testis

**IP:** HEK-293 cells,

**IF:** hTERT-RPE1 cells,

## Background Information

## Notable Publications

Author	Pubmed ID	Journal	Application
Tomoharu Kanie	28625565	Dev Cell	WB
Ryota Takei	29654116	Biol Open	WB,IF

## Storage

**Storage:**

Store at -20°C. Stable for one year after shipment.

**Storage Buffer:**

PBS with 0.02% sodium azide and 50% glycerol pH 7.3.

Aliquoting is unnecessary for -20°C storage

\*\*\* 20ul sizes contain 0.1% BSA

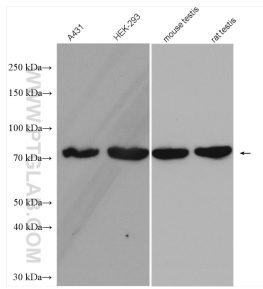
For technical support and original validation data for this product please contact:

T: 1 (888) 4PTGLAB (1-888-478-4522) (toll free in USA), or 1(312) 455-8498 (outside USA)

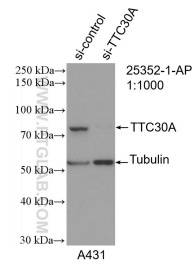
E: proteintech@ptglab.com  
W: ptglab.com

This product is exclusively available under Proteintech Group brand and is not available to purchase from any other manufacturer.

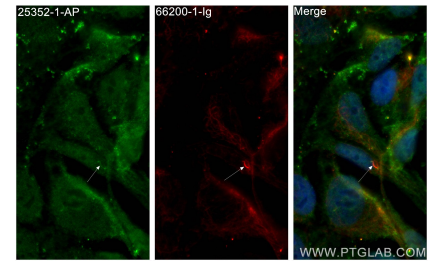
## Selected Validation Data



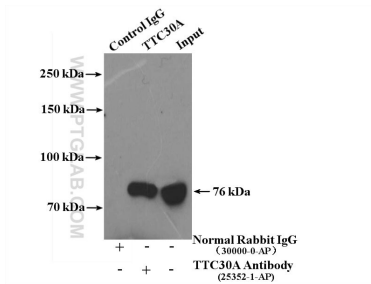
Various lysates were subjected to SDS PAGE followed by western blot with 25352-1-AP (TTC30A antibody) at dilution of 1:1000 incubated at room temperature for 1.5 hours.



WB result of TTC30A antibody (25352-1-AP; 1:1000; incubated at room temperature for 1.5 hours) with sh-Control and sh-TTC30A transfected A431 cells.



Immunofluorescent analysis of (4% PFA) fixed hTERT-RPE1 cells using TTC30A antibody (25352-1-AP) at dilution of 1:400 and CoraLite®488-Conjugated AffiniPure Goat Anti-Rabbit IgG(H+L), acetylated Tubulin(Lys40) antibody (66200-1-Ig, Clone: 7E5H8, red).



IP Result of anti-TTC30A (IP:25352-1-AP, 4ug; Detection:25352-1-AP 1:500) with HEK-293 cells lysate 2600ug.