

For Research Use Only

ZFYVE28 Polyclonal antibody

Catalog Number: 25360-1-AP



Basic Information

Catalog Number: 25360-1-AP	GenBank Accession Number: BC137309	Purification Method: Antigen affinity purification
Size: 150ul , Concentration: 850 ug/ml by Nanodrop;	GeneID (NCBI): 57732	Recommended Dilutions: WB 1:500-1:3000
Source: Rabbit	UNIPROT ID: Q9HCC9	IF/ICC 1:50-1:500
Isotype: IgG	Full Name: zinc finger, FYVE domain containing 28	
Immunogen Catalog Number: AG19796	Calculated MW: 887 aa, 96 kDa	
	Observed MW: 96 kDa	

Applications

Tested Applications: WB, IF/ICC, ELISA	Positive Controls:
Species Specificity: human	WB : MCF-7 cells, IF/ICC : HepG2 cells, HeLa cells

Background Information

ZFYVE28, also known as LST2, belongs to the Lst-2 family. ZFYVE28 is a FYVE domain protein that has been shown to be a regulator of the epidermal growth factor receptor (EGFR) pathway. The non-ubiquitinated form of ZFYVE28 co-localizes with EGFR in endosomes and promotes receptor degradation (PMID: 29549365). ZFYVE28 has 8 isoforms with the molecular mass of 19-33, 83-93, and 96 kDa.

Storage

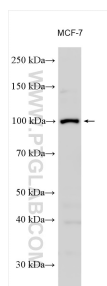
Storage:
Store at -20°C. Stable for one year after shipment.
Storage Buffer:
PBS with 0.02% sodium azide and 50% glycerol pH 7.3.
Aliquoting is unnecessary for -20°C storage

*** 20ul sizes contain 0.1% BSA

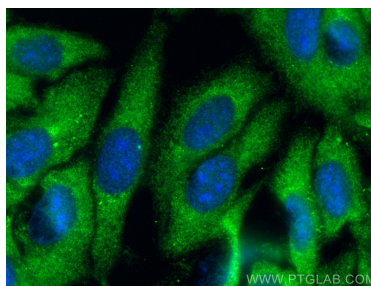
For technical support and original validation data for this product please contact:
T: 1 (888) 4PTGLAB (1-888-478-4522) (toll free in USA), or 1(312) 455-8498 (outside USA)
E: proteintech@ptglab.com
W: ptglab.com

This product is exclusively available under Proteintech Group brand and is not available to purchase from any other manufacturer.

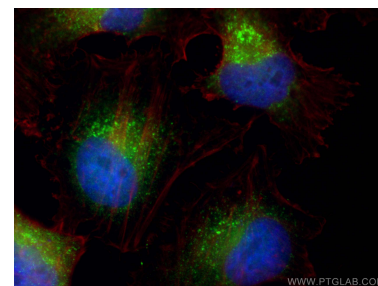
Selected Validation Data



MCF-7 cells were subjected to SDS PAGE followed by western blot with 25360-1-AP (ZFYVE28 antibody) at dilution of 1:1500 incubated at room temperature for 1.5 hours.



Immunofluorescent analysis of (-20°C Ethanol) fixed HepG2 cells using ZFYVE28 antibody (25360-1-AP) at dilution of 1:200 and CoraLite®488-Conjugated AffiniPure Goat Anti-Rabbit IgG(H+L).



Immunofluorescent analysis of (4% PFA) fixed HeLa cells using ZFYVE28 antibody (25360-1-AP) at dilution of 1:400 and CoraLite®488-Conjugated AffiniPure Goat Anti-Rabbit IgG(H+L) (SA00013-2), CL594-phalloidin (red).