

For Research Use Only

# C16orf93 Polyclonal antibody

Catalog Number: 25364-1-AP



## Basic Information

**Catalog Number:**

25364-1-AP

**Size:**

150ul , Concentration: 550 ug/ml by Nanodrop and 387 ug/ml by Bradford method using BSA as the standard;

**Source:**

Rabbit

**Isotype:**

IgG

**Immunogen Catalog Number:**

AG21676

**GenBank Accession Number:**

BC128129

**GeneID (NCBI):**

90835

**UNIPROT ID:**

A1A4V9

**Full Name:**

chromosome 16 open reading frame 93

**Calculated MW:**

331 aa, 38 kDa

**Observed MW:**

34 kDa

**Purification Method:**

Antigen affinity purification

**Recommended Dilutions:**

WB 1:200-1:1000

## Applications

**Tested Applications:**

WB, ELISA

**Species Specificity:**

human

**Positive Controls:**

WB : Raji cells,

## Background Information

C16orf93, also named as CCDC189, is a coiled-coil domain-containing protein which has four isoforms with MW 38 kDa, 34 kDa, 12 kDa and 20 kDa.

## Storage

**Storage:**

Store at -20°C. Stable for one year after shipment.

**Storage Buffer:**

PBS with 0.02% sodium azide and 50% glycerol pH 7.3.

Aliquoting is unnecessary for -20°C storage

\*\*\* 20ul sizes contain 0.1% BSA

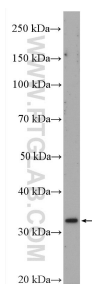
For technical support and original validation data for this product please contact:

T: 1 (888) 4PTGLAB (1-888-478-4522) (toll free in USA), or 1(312) 455-8498 (outside USA)

E: [proteintech@ptglab.com](mailto:proteintech@ptglab.com)  
W: [ptglab.com](http://ptglab.com)

This product is exclusively available under Proteintech Group brand and is not available to purchase from any other manufacturer.

## Selected Validation Data



Raji cells were subjected to SDS PAGE followed by western blot with 25364-1-AP (C16orf93 antibody) at dilution of 1:300 incubated at room temperature for 1.5 hours.