

For Research Use Only

TMEM182 Polyclonal antibody

Catalog Number: 25366-1-AP



Basic Information

| | | |
|--|--|--|
| Catalog Number: 25366-1-AP | GenBank Accession Number: BC130308 | Purification Method: Antigen affinity purification |
| Size: 150ul , Concentration: 800 µg/ml by Nanodrop and 360 µg/ml by Bradford method using BSA as the standard; | GeneID (NCBI): 130827 | Recommended Dilutions: WB 1:200-1:1000 IHC 1:20-1:200 |
| Source: Rabbit | Full Name: transmembrane protein 182 | |
| Isotype: IgG | Calculated MW: 229 aa, 26 kDa | |
| Immunogen Catalog Number: AG21906 | Observed MW: 15 kDa 26 kDa | |

Applications

| | |
|--|--|
| Tested Applications: IHC, WB, ELISA | Positive Controls: |
| Species Specificity: human, mouse | WB : mouse skeletal muscle tissue, IHC : human liver cancer tissue, |
| Note-IHC: suggested antigen retrieval with TE buffer pH 9.0; (*) Alternatively, antigen retrieval may be performed with citrate buffer pH 6.0 | |

Background Information

TMEM182 may function in upon brown preadipocyte to adipocyte conversion. TMEM182 has some isoforms with MW 12-15 kDa and 26 kDa.

Storage

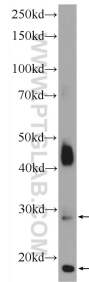
Storage:
Store at -20°C. Stable for one year after shipment.
Storage Buffer:
PBS with 0.02% sodium azide and 50% glycerol pH 7.3.
Aliquoting is unnecessary for -20°C storage

*** 20ul sizes contain 0.1% BSA

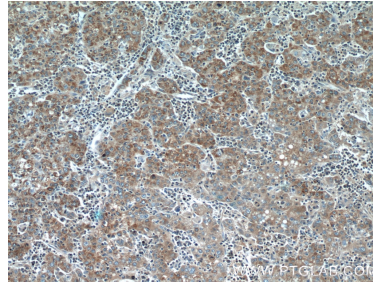
For technical support and original validation data for this product please contact:
T: 1 (888) 4PTGLAB (1-888-478-4522) (toll free in USA), or 1(312) 455-8498 (outside USA)
E: proteintech@ptglab.com
W: ptglab.com

This product is exclusively available under Proteintech Group brand and is not available to purchase from any other manufacturer.

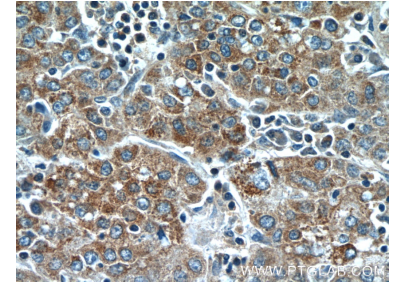
Selected Validation Data



mouse skeletal muscle tissue were subjected to SDS PAGE followed by western blot with 25366-1-AP (TMEM182 Antibody) at dilution of 1:300 incubated at room temperature for 1.5 hours.



Immunohistochemical analysis of paraffin-embedded human liver cancer tissue slide using 25366-1-AP (TMEM182 Antibody) at dilution of 1:50 (under 10x lens).



Immunohistochemical analysis of paraffin-embedded human liver cancer tissue slide using 25366-1-AP (TMEM182 Antibody) at dilution of 1:50 (under 40x lens).