

For Research Use Only

# YOD1 Polyclonal antibody

Catalog Number: 25370-1-AP

Featured Product

15 Publications



## Basic Information

### Catalog Number:

25370-1-AP

### Size:

150ul, Concentration: 800 ug/ml by Nanodrop and 480 ug/ml by Bradford method using BSA as the standard;

### Source:

Rabbit

### Isotype:

IgG

### Immunogen Catalog Number:

AG21881

### GenBank Accession Number:

BC137167

### GeneID (NCBI):

55432

### UNIPROT ID:

Q5VVQ6

### Full Name:

YOD1 OTU deubiquinating enzyme 1 homolog (S. cerevisiae)

### Calculated MW:

348 aa, 38 kDa

### Observed MW:

38 kDa

### Purification Method:

Antigen affinity purification

### Recommended Dilutions:

WB 1:500-1:2000

IP 0.5-4.0 ug for 1.0-3.0 mg of total protein lysate

IHC 1:100-1:400

## Applications

### Tested Applications:

WB, IP, IHC, ELISA

### Cited Applications:

WB, IHC, IF, IP

### Species Specificity:

human

### Cited Species:

human, mouse, pig, monkey

### Positive Controls:

WB : K-562 cells,

IP : K-562 cells,

IHC : human spleen tissue,

**Note-IHC: suggested antigen retrieval with TE buffer pH 9.0; (\*) Alternatively, antigen retrieval may be performed with citrate buffer pH 6.0**

## Notable Publications

Author	Pubmed ID	Journal	Application
Nitchakarn Kaokhum	36182100	Mol Cell Proteomics	WB
Xiao-Long Zhou	30345304	Biomed Res Int	WB
Zhishuo Zhang	35642058	Cancer Cell Int	WB,IHC

## Storage

### Storage:

Store at -20°C. Stable for one year after shipment.

### Storage Buffer:

PBS with 0.02% sodium azide and 50% glycerol, pH7.3

Aliquoting is unnecessary for -20°C storage

\*\*\* 20ul sizes contain 0.1% BSA

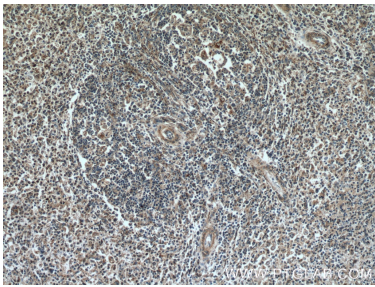
For technical support and original validation data for this product please contact:

T: 1 (888) 4PTGLAB (1-888-478-4522) (toll free in USA), or 1(312) 455-8498 (outside USA)

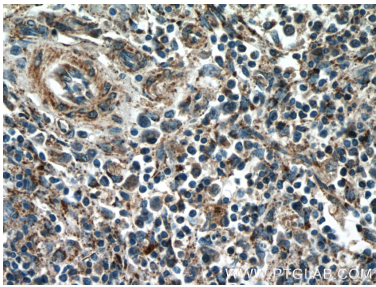
E: proteintech@ptglab.com  
W: ptglab.com

This product is exclusively available under Proteintech Group brand and is not available to purchase from any other manufacturer.

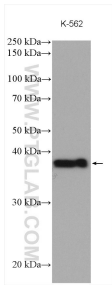
Selected Validation Data



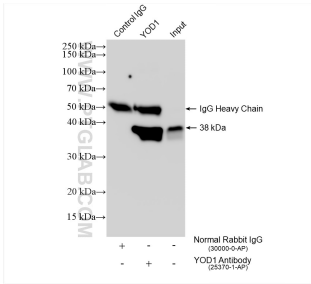
Immunohistochemical analysis of paraffin-embedded human spleen tissue slide using 25370-1-AP (YOD1 antibody) at dilution of 1:200 (under 10x lens).



Immunohistochemical analysis of paraffin-embedded human spleen tissue slide using 25370-1-AP (YOD1 antibody) at dilution of 1:200 (under 40x lens).



K-562 cells were subjected to SDS PAGE followed by western blot with 25370-1-AP (YOD1 antibody) at dilution of 1:1000 incubated at room temperature for 1.5 hours.



IP result of anti-YOD1 (IP:25370-1-AP, 4ug; Detection:25370-1-AP 1:6000) with K-562 cells lysate 2400 ug.