

For Research Use Only

Exportin 4 Polyclonal antibody, PBS Only

Catalog Number: 25373-1-PBS

Featured Product



Basic Information

Catalog Number:

25373-1-PBS

Size:

100ug, Concentration: 1 mg/ml by Nanodrop;

Source:

Rabbit

Isotype:

IgG

Immunogen Catalog Number:

AG21845

GenBank Accession Number:

BC113571

GeneID (NCBI):

64328

UNIPROT ID:

Q9C0E2

Full Name:

exportin 4

Calculated MW:

1151 aa, 130 kDa

Observed MW:

127 kDa

Purification Method:

Antigen affinity purification

Applications

Tested Applications:

WB, IHC, Indirect ELISA

Species Specificity:

human, mouse

Background Information

exportin 4 (XPO4) maps to chromosome 13q and belongs to the importin β family which acts as a bidirectional nuclear transport receptor. Decreased XPO4 expression has been shown to associate with hepatocellular carcinoma. A genome-wide copy number variation (CNV) association study in a small cohort of Malaysian subjects identified a CNV in XPO4 to be correlated with the progression of metabolic (dysfunction) associated fatty liver disease (MAFLD). (PMID: 34388518)

Storage

Storage:

Store at -80°C.

Storage Buffer:

PBS only, pH7.3

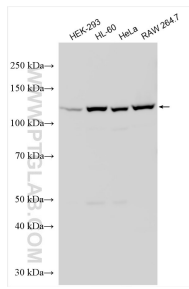
For technical support and original validation data for this product please contact:

T: 1 (888) 4PTGLAB (1-888-478-4522) (toll free in USA), or 1(312) 455-8498 (outside USA)

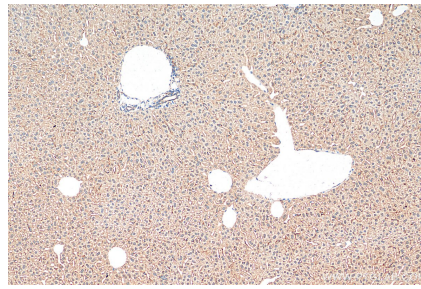
E: proteintech@ptglab.com
W: ptglab.com

This product is exclusively available under Proteintech Group brand and is not available to purchase from any other manufacturer.

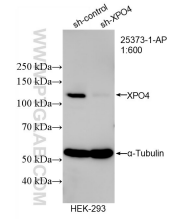
Selected Validation Data



Various lysates were subjected to SDS PAGE followed by western blot with 25373-1-AP (Exportin 4 antibody) at dilution of 1:600 incubated at room temperature for 1.5 hours. This data was developed using the same antibody clone with 25373-1-PBS in a different storage buffer formulation.



Immunohistochemical analysis of paraffin-embedded mouse liver tissue slide using 25373-1-AP (Exportin 4 antibody) at dilution of 1:200 (under 10x lens). Heat mediated antigen retrieval with Tris-EDTA buffer (pH 9.0). This data was developed using the same antibody clone with 25373-1-PBS in a different storage buffer formulation.



WB result of Exportin 4 antibody (25373-1-AP; 1:600; incubated at room temperature for 1.5 hours) with sh-Control and sh-Exportin 4 transfected HEK-293 cells. This data was developed using the same antibody clone with 25373-1-PBS in a different storage buffer formulation.