

For Research Use Only

# DDI2 Polyclonal antibody, PBS Only

Catalog Number: 25377-1-PBS



## Basic Information

**Catalog Number:**

25377-1-PBS

**Size:**

100ug, Concentration: 1 mg/ml by Nanodrop;

**Source:**

Rabbit

**Isotype:**

IgG

**Immunogen Catalog Number:**

AG21953

**GenBank Accession Number:**

BC006011

**GeneID (NCBI):**

84301

**UNIPROT ID:**

Q5TDH0

**Full Name:**

DDI1, DNA-damage inducible 1, homolog 2 (S. cerevisiae)

**Calculated MW:**

399 aa, 45 kDa

**Observed MW:**

45-50 kDa

**Purification Method:**

Antigen affinity purification

## Applications

**Tested Applications:**

WB, IF/ICC, Indirect ELISA

**Species Specificity:**

human

## Background Information

DDI2 contains 399 amino acids and contains an N-terminal ubiquitin-like (UBL) domain and a highly conserved retroviral protease-like (RVP) domain. DDI2 is an aspartic endoprotease that cleaves ubiquitylated target proteins to assist in their processing by the ubiquitin-proteasome system (UPS), especially when the UPS is inhibited (PMID: 32521225).

## Storage

**Storage:**

Store at -80°C.

**Storage Buffer:**

PBS only, pH7.3

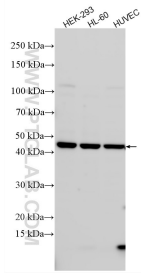
For technical support and original validation data for this product please contact:

T: 1 (888) 4PTGLAB (1-888-478-4522) (toll free in USA), or 1(312) 455-8498 (outside USA)

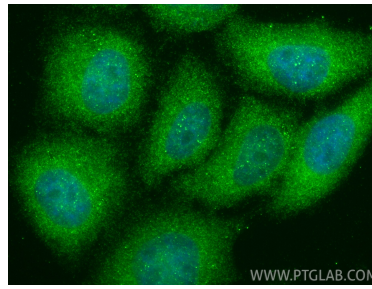
E: [proteintech@ptglab.com](mailto:proteintech@ptglab.com)  
W: [ptglab.com](http://ptglab.com)

**This product is exclusively available under Proteintech Group brand and is not available to purchase from any other manufacturer.**

## Selected Validation Data



Various lysates were subjected to SDS PAGE followed by western blot with 25377-1-AP (DDI2 antibody) at dilution of 1:6000 incubated at room temperature for 1.5 hours. This data was developed using the same antibody clone with 25377-1-PBS in a different storage buffer formulation.



Immunofluorescent analysis of (4% PFA) fixed HepG2 cells using DDI2 antibody (25377-1-AP) at dilution of 1:200 and CoraLite®488-Conjugated Goat Anti-Rabbit IgG(H+L) (SA00013-2). This data was developed using the same antibody clone with 25377-1-PBS in a different storage buffer formulation.