

For Research Use Only

# PROC Polyclonal antibody, PBS Only

Catalog Number: 25382-1-PBS



## Basic Information

**Catalog Number:**

25382-1-PBS

**Size:**

100ug , Concentration: 1 mg/ml by Nanodrop;

**Source:**

Rabbit

**Isotype:**

IgG

**Immunogen Catalog Number:**

AG11328

**GenBank Accession Number:**

BC034377

**GeneID (NCBI):**

5624

**UNIPROT ID:**

P04070

**Full Name:**

protein C (inactivator of coagulation factors Va and VIIIa)

**Calculated MW:**

461 aa, 52 kDa

**Observed MW:**

52 kDa

**Purification Method:**

Antigen affinity purification

## Applications

**Tested Applications:**

WB, IHC, IF/ICC, Indirect ELISA

**Species Specificity:**

human, mouse

## Background Information

PROC belongs to the peptidase S1 family. PROC is a vitamin K-dependent serine protease that regulates blood coagulation by inactivating factors Va and VIIIa in the presence of calcium ions and phospholipids (PMID:25618265). It exerts a protective effect on the endothelial cell barrier function (PMID:25651845).

## Storage

**Storage:**

Store at -80°C.

**Storage Buffer:**

PBS Only

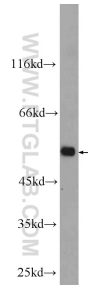
For technical support and original validation data for this product please contact:

T: 1 (888) 4PTGLAB (1-888-478-4522) (toll free in USA), or 1(312) 455-8498 (outside USA)

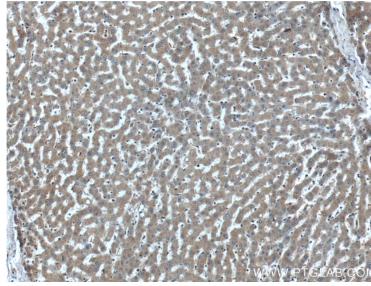
E: [proteintech@ptglab.com](mailto:proteintech@ptglab.com)  
W: [ptglab.com](http://ptglab.com)

This product is exclusively available under Proteintech Group brand and is not available to purchase from any other manufacturer.

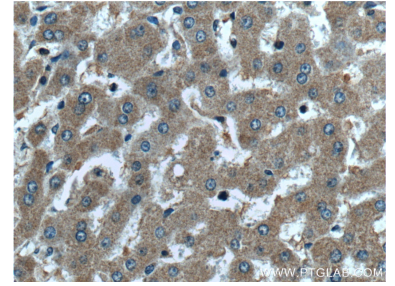
## Selected Validation Data



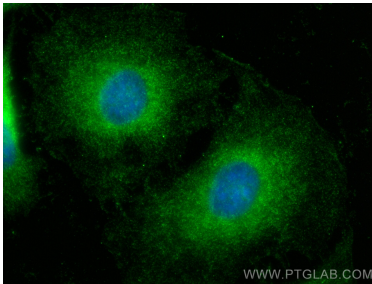
mouse liver tissue were subjected to SDS PAGE followed by western blot with 25382-1-AP (PROC Antibody) at dilution of 1:1000 incubated at room temperature for 1.5 hours. This data was developed using the same antibody clone with 25382-1-PBS in a different storage buffer formulation.



Immunohistochemical analysis of paraffin-embedded human liver tissue slide using 25382-1-AP (PROC Antibody) at dilution of 1:200 (under 10x lens). This data was developed using the same antibody clone with 25382-1-PBS in a different storage buffer formulation.



Immunohistochemical analysis of paraffin-embedded human liver tissue slide using 25382-1-AP (PROC Antibody) at dilution of 1:200 (under 40x lens). This data was developed using the same antibody clone with 25382-1-PBS in a different storage buffer formulation.



Immunofluorescent analysis of (-20°C Ethanol) fixed HeLa cells using PROC antibody (25382-1-AP) at dilution of 1:200 and Multi-rAb CoraLite® Plus 488-Goat Anti-Rabbit Recombinant Secondary Antibody (H+L) (RGAR002). This data was developed using the same antibody clone with 25382-1-PBS in a different storage buffer formulation.