

For Research Use Only

# MTF1 Polyclonal antibody

Catalog Number: 25383-1-AP

Featured Product

23 Publications



## Basic Information

### Catalog Number:

25383-1-AP

### Size:

150ul, Concentration: 450 µg/ml by Nanodrop and 240 µg/ml by Bradford method using BSA as the standard;

### Source:

Rabbit

### Isotype:

IgG

### Immunogen Catalog Number:

AG21848

### GenBank Accession Number:

BC014454

### GeneID (NCBI):

4520

### UNIPROT ID:

Q14872

### Full Name:

metal-regulatory transcription factor 1

### Calculated MW:

753 aa, 81 kDa

### Observed MW:

65-70 kDa

### Purification Method:

Antigen affinity purification

### Recommended Dilutions:

WB 1:500-1:2000

IHC 1:50-1:500

## Applications

### Tested Applications:

IHC, WB, ELISA

### Cited Applications:

ChIP, IF, IHC, IP, WB

### Species Specificity:

human, mouse

### Cited Species:

human, mouse, fish

**Note-IHC: suggested antigen retrieval with TE buffer pH 9.0; (\*) Alternatively, antigen retrieval may be performed with citrate buffer pH 6.0**

### Positive Controls:

**WB:** mouse liver tissue, Jurkat cells, mouse brain tissue, mouse heart tissue, mouse skeletal muscle tissue

**IHC:** human liver tissue,

## Background Information

Metal regulatory transcription factor 1 (MTF1), contains six C2H2-type zinc finger and localizes in the nucleus. MTF1 is a 753 amino acid protein and calculated molecular weight is 81 kDa. We always detected a 65-70 protein by western blot. MTF1 binds to the metal responsive element and activates the metallothionein I promoter.

## Notable Publications

Author	Pubmed ID	Journal	Application
Sidi Yang	31569998	FASEB J	
Shu-Wei Chen	34769475	Int J Mol Sci	WB
Xuelei Ruan	32464546	Mol Ther Nucleic Acids	WB

## Storage

### Storage:

Store at -20°C. Stable for one year after shipment.

### Storage Buffer:

PBS with 0.02% sodium azide and 50% glycerol pH 7.3.

Aliquoting is unnecessary for -20°C storage

\*\*\* 20ul sizes contain 0.1% BSA

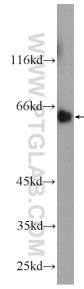
For technical support and original validation data for this product please contact:

T: 1 (888) 4PTGLAB (1-888-478-4522) (toll free in USA), or 1(312) 455-8498 (outside USA)

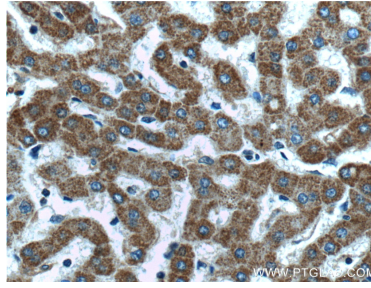
E: [proteintech@ptglab.com](mailto:proteintech@ptglab.com)  
W: [ptglab.com](http://ptglab.com)

This product is exclusively available under Proteintech Group brand and is not available to purchase from any other manufacturer.

## Selected Validation Data



mouse liver tissue were subjected to SDS PAGE followed by western blot with 25383-1-AP (MTF1 Antibody) at dilution of 1:1000 incubated at room temperature for 1.5 hours.



Immunohistochemical analysis of paraffin-embedded human liver tissue slide using 25383-1-AP (MTF1 Antibody) at dilution of 1:200 (under 40x lens).