

For Research Use Only

FAM160B1 Polyclonal antibody

Catalog Number: 25388-1-AP



Basic Information

Catalog Number:

25388-1-AP

Size:

150ul, Concentration: 600 ug/ml by Nanodrop and 420 ug/ml by Bradford method using BSA as the standard;

Source:

Rabbit

Isotype:

IgG

Immunogen Catalog Number:

AG22051

GenBank Accession Number:

BC037207

GeneID (NCBI):

57700

UNIPROT ID:

Q5W0V3

Full Name:

family with sequence similarity 160, member B1

Calculated MW:

765 aa, 86 kDa

Observed MW:

105 kDa

Purification Method:

Antigen affinity purification

Recommended Dilutions:

WB 1:500-1:1000

IP 0.5-4.0 ug for 1.0-3.0 mg of total protein lysate

IHC 1:50-1:500

IF/ICC 1:20-1:200

Applications

Tested Applications:

WB, IHC, IF/ICC, IP, ELISA

Species Specificity:

human

Note-IHC: suggested antigen retrieval with TE buffer pH 9.0; (*) Alternatively, antigen retrieval may be performed with citrate buffer pH 6.0

Positive Controls:

WB: PC-3 cells,

IP: PC-3 cells,

IHC: human intrahepatic cholangiocarcinoma tissue,

IF/ICC: PC-3 cells,

Background Information

FAM160B1, also named as KIAA1600, is a 765 amino acid protein, which belongs to the UPF0518 family. The biological function of FAM160B1 is still non-known. FAM160B1 exists as two isoforms and the molecular weight of isoform one is a 86 kDa protein. The isoform two is produced by alternative splicing and is a 83 kDa protein. There are modified residues of FAM160B1 protein, so we detected 95 kDa and 100 kDa two bands by western blotting.

Storage

Storage:

Store at -20°C. Stable for one year after shipment.

Storage Buffer:

PBS with 0.02% sodium azide and 50% glycerol pH 7.3.

Aliquoting is unnecessary for -20°C storage

*** 20ul sizes contain 0.1% BSA

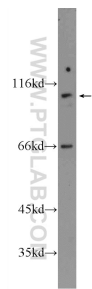
For technical support and original validation data for this product please contact:

T: 1 (888) 4PTGLAB (1-888-478-4522) (toll free in USA), or 1(312) 455-8498 (outside USA)

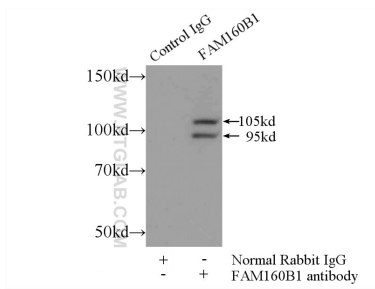
E: proteintech@ptglab.com
W: ptglab.com

This product is exclusively available under Proteintech Group brand and is not available to purchase from any other manufacturer.

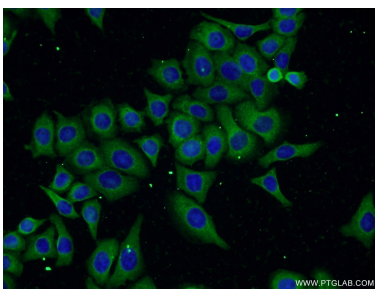
Selected Validation Data



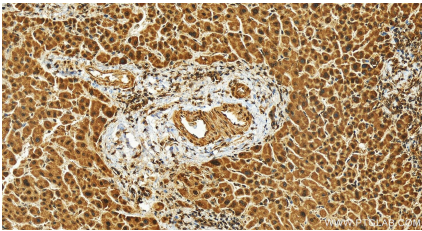
PC-3 cells were subjected to SDS PAGE followed by western blot with 25388-1-AP (FAM160B1 Antibody) at dilution of 1:600 incubated at room temperature for 1.5 hours.



IP result of anti-FAM160B1 (IP:25388-1-AP, 5ug; Detection:25388-1-AP 1:300) with PC-3 cells lysate 1500ug.



Immunofluorescent analysis of PC-3 cells using 25388-1-AP (FAM160B1 antibody) at dilution of 1:50 and Alexa Fluor 488-conjugated AffiniPure Goat Anti-Rabbit IgG(H+L).



Immunohistochemical analysis of paraffin-embedded human intrahepatic cholangiocarcinoma tissue slide using 25388-1-AP (FAM160B1 antibody) at dilution of 1:100 (under 20x lens). Heat mediated antigen retrieval with Tris-EDTA buffer (pH 9.0).