

For Research Use Only

GAS2L3 Polyclonal antibody

Catalog Number: 25409-1-AP



Basic Information

Catalog Number: 25409-1-AP	GenBank Accession Number: BC043366	Purification Method: Antigen affinity purification
Size: 150ul , Concentration: 600 ug/ml by Nanodrop;	GeneID (NCBI): 283431	Recommended Dilutions: WB: 1:500-1:3000 IHC: 1:50-1:500
Source: Rabbit	UNIPROT ID: Q86X01	
Isotype: IgG	Full Name: growth arrest-specific 2 like 3	
Immunogen Catalog Number: AG22097	Calculated MW: 694 aa, 75 kDa	
	Observed MW: 75 kDa	

Applications

Tested Applications: WB, IHC, ELISA	Positive Controls:
Species Specificity: human, mouse, rat	WB : HEK-293 cells, mouse heart tissue, rat heart tissue
Note-IHC: suggested antigen retrieval with TE buffer pH 9.0; (*) Alternatively, antigen retrieval may be performed with citrate buffer pH 6.0	IHC : rat heart tissue,

Background Information

GAS2L3 also known as G2L3, belongs to the GAS2 family of four related proteins. It contains an N-terminal calponin homology (CH) domain and a C-terminal GAS2-related (GAR) domain, which are putative actin and microtubule binding domains. GAS2L3 is specifically expressed in mitosis and it localizes to the midbody and the constriction zone during cytokinesis (PMID: 28937871).

Storage

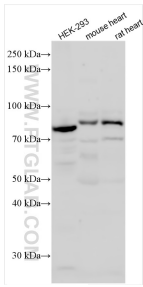
Storage:
Store at -20°C. Stable for one year after shipment.
Storage Buffer:
PBS with 0.02% sodium azide and 50% glycerol, pH7.3
Aliquoting is unnecessary for -20°C storage

*** 20ul sizes contain 0.1% BSA

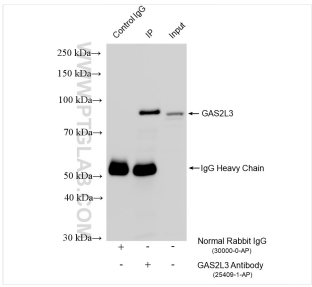
For technical support and original validation data for this product please contact:
T: 1 (888) 4PTGLAB (1-888-478-4522) (toll free in USA), or 1(312) 455-8498 (outside USA)
E: proteintech@ptglab.com
W: ptglab.com

This product is exclusively available under Proteintech Group brand and is not available to purchase from any other manufacturer.

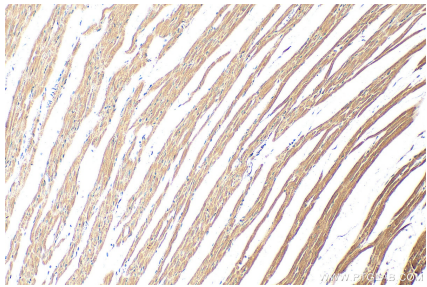
Selected Validation Data



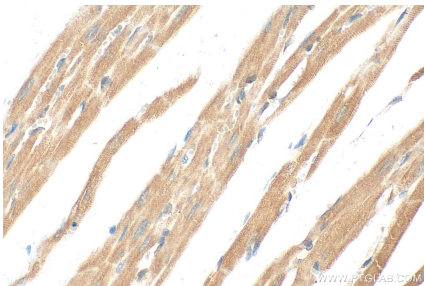
Various lysates were subjected to SDS PAGE followed by western blot with 25409-1-AP (GAS2L3 antibody) at dilution of 1:1500 incubated at room temperature for 1.5 hours.



IP result of anti-GAS2L3 (IP:25409-1-AP, 4ug; Detection:25409-1-AP 1:1000) with HEK-293 cells lysate 1800 ug.



Immunohistochemical analysis of paraffin-embedded rat heart tissue slide using 25409-1-AP (GAS2L3 antibody) at dilution of 1:200 (under 10x lens). Heat mediated antigen retrieval with Tris-EDTA buffer (pH 9.0).



Immunohistochemical analysis of paraffin-embedded rat heart tissue slide using 25409-1-AP (GAS2L3 antibody) at dilution of 1:200 (under 40x lens). Heat mediated antigen retrieval with Tris-EDTA buffer (pH 9.0).