

For Research Use Only

# GAS2L3 Polyclonal antibody, PBS Only

Catalog Number: 25409-1-PBS



## Basic Information

<b>Catalog Number:</b> 25409-1-PBS	<b>GenBank Accession Number:</b> BC043366	<b>Purification Method:</b> Antigen affinity purification
<b>Size:</b> 100ug, Concentration: 1 mg/ml by Nanodrop;	<b>GeneID (NCBI):</b> 283431	
<b>Source:</b> Rabbit	<b>UNIPROT ID:</b> Q86X01	
<b>Isotype:</b> IgG	<b>Full Name:</b> growth arrest-specific 2 like 3	
<b>Immunogen Catalog Number:</b> AG22097	<b>Calculated MW:</b> 694 aa, 75 kDa	
	<b>Observed MW:</b> 75 kDa	

## Applications

**Tested Applications:**  
WB, IHC, Indirect ELISA

**Species Specificity:**  
human, mouse, rat

## Background Information

GAS2L3 also known as G2L3, belongs to the GAS2 family of four related proteins. It contains an N-terminal calponin homology (CH) domain and a C-terminal GAS2-related (GAR) domain, which are putative actin and microtubule binding domains. GAS2L3 is specifically expressed in mitosis and it localizes to the midbody and the constriction zone during cytokinesis (PMID: 28937871).

## Storage

**Storage:**  
Store at -80°C.  
**Storage Buffer:**  
PBS only, pH7.3

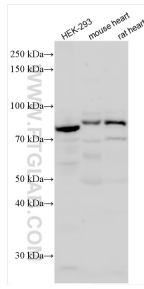
For technical support and original validation data for this product please contact:

T: 1 (888) 4PTGLAB (1-888-478-4522) (toll free  
in USA), or 1(312) 455-8498 (outside USA)

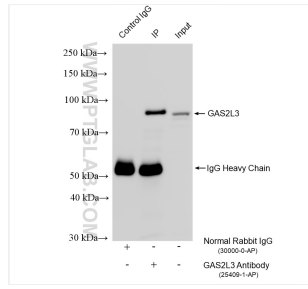
E: [proteintech@ptglab.com](mailto:proteintech@ptglab.com)  
W: [ptglab.com](http://ptglab.com)

**This product is exclusively available under Proteintech Group brand and is not available to purchase from any other manufacturer.**

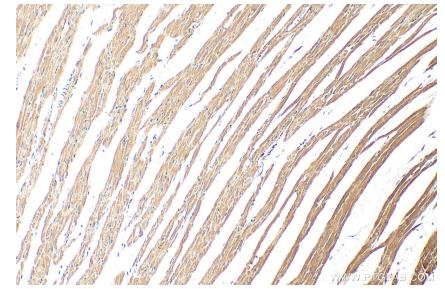
## Selected Validation Data



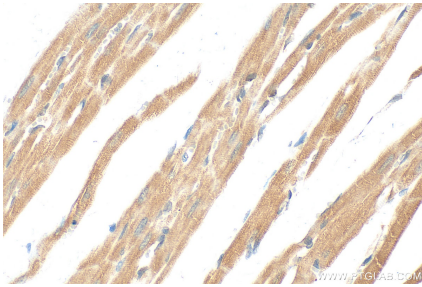
Various lysates were subjected to SDS PAGE followed by western blot with 25409-1-AP (GAS2L3 antibody) at dilution of 1:1500 incubated at room temperature for 1.5 hours. This data was developed using the same antibody clone with 25409-1-PBS in a different storage buffer formulation.



IP result of anti-GAS2L3 (IP:25409-1-AP, 4ug; Detection:25409-1-AP 1:1000) with HEK-293 cells lysate 1800 ug. This data was developed using the same antibody clone with 25409-1-PBS in a different storage buffer formulation.



Immunohistochemical analysis of paraffin-embedded rat heart tissue slide using 25409-1-AP (GAS2L3 antibody) at dilution of 1:200 (under 10x lens). Heat mediated antigen retrieval with Tris-EDTA buffer (pH 9.0). This data was developed using the same antibody clone with 25409-1-PBS in a different storage buffer formulation.



Immunohistochemical analysis of paraffin-embedded rat heart tissue slide using 25409-1-AP (GAS2L3 antibody) at dilution of 1:200 (under 40x lens). Heat mediated antigen retrieval with Tris-EDTA buffer (pH 9.0). This data was developed using the same antibody clone with 25409-1-PBS in a different storage buffer formulation.