

For Research Use Only

G6PD Polyclonal antibody

Catalog Number: 25413-1-AP

Featured Product

43 Publications



Basic Information

Catalog Number:

25413-1-AP

Size:

150ul, Concentration: 800 ug/ml by Nanodrop and 427 ug/ml by Bradford method using BSA as the standard;

Source:

Rabbit

Isotype:

IgG

Immunogen Catalog Number:

AG21862

GenBank Accession Number:

BC000337

GeneID (NCBI):

2539

UNIPROT ID:

P11413

Full Name:

glucose-6-phosphate dehydrogenase

Calculated MW:

59 kDa

Observed MW:

59 kDa

Purification Method:

Antigen affinity purification

Recommended Dilutions:

WB 1:1000-1:5000

IHC 1:250-1:1000

IF/ICC 1:50-1:500

Applications

Tested Applications:

WB, IHC, IF/ICC, ELISA

Cited Applications:

WB, IHC, IF, IP, CoIP

Species Specificity:

human

Cited Species:

human, mouse, rat, sheep

Note-IHC: suggested antigen retrieval with TE buffer pH 9.0; (*) Alternatively, antigen retrieval may be performed with citrate buffer pH 6.0

Positive Controls:

WB : MCF-7 cells, HeLa cells, HEK-293 cells

IHC : human liver cancer tissue, human ovary tumor tissue

IF/ICC : HeLa cells,

Background Information

G6PD (Glucose-6-phosphate 1-dehydrogenase) belongs to the glucose-6-phosphate dehydrogenase family. It is a housekeeping enzyme encoded in mammals by an X-linked gene. G6PD has important functions in intermediary metabolism because it catalyzes the first step in the pentose phosphate pathway and provides reductive potential in the form of NADPH. (PMID:7489710). This protein has 3 isoforms produced by alternative splicing.

Notable Publications

Author	Pubmed ID	Journal	Application
Gongjun Wang	36248857	Front Immunol	IHC
Teresa W-M Fan	36150727	J Immunol	
Xiaohan Jin	36243112	J Biol Chem	WB

Storage

Storage:

Store at -20°C. Stable for one year after shipment.

Storage Buffer:

PBS with 0.02% sodium azide and 50% glycerol pH 7.3.

Aliquoting is unnecessary for -20°C storage

*** 20ul sizes contain 0.1% BSA

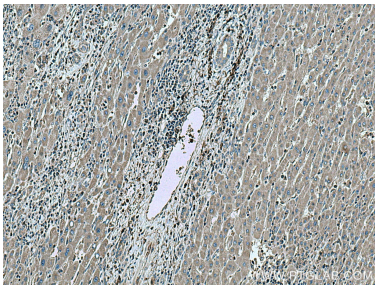
For technical support and original validation data for this product please contact:

T: 1 (888) 4PTGLAB (1-888-478-4522) (toll free in USA), or 1(312) 455-8498 (outside USA)

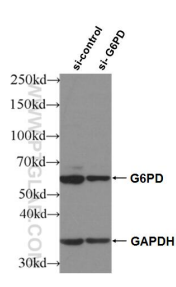
E: proteintech@ptglab.com
W: ptglab.com

This product is exclusively available under Proteintech Group brand and is not available to purchase from any other manufacturer.

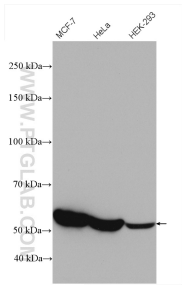
Selected Validation Data



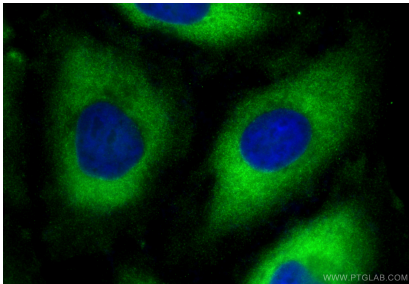
Immunohistochemical analysis of paraffin-embedded human liver cancer tissue slide using 25413-1-AP (G6PD antibody) at dilution of 1:500 (under 10x lens). Heat mediated antigen retrieval with Tris-EDTA buffer (pH 9.0).



WB result of G6PD antibody (25413-1-AP; 1:3000; incubated at room temperature for 1.5 hours) with sh-Control and sh-G6PD transfected HeLa cells.



MCF-7 cells were subjected to SDS PAGE followed by western blot with 25413-1-AP (G6PD antibody) at dilution of 1:3000 incubated at room temperature for 1.5 hours.



Immunofluorescent analysis of (-20°C Ethanol) fixed HeLa cells using G6PD antibody (25413-1-AP) at dilution of 1:200 and Multi-rAb CoraLite® Plus 488-Goat Anti-Rabbit Recombinant Secondary Antibody (H+L) (RGAR002).