

For Research Use Only

TSC22D2 Polyclonal antibody, PBS Only

Catalog Number: 25418-1-PBS



Basic Information

Catalog Number: 25418-1-PBS	GenBank Accession Number: BC044643	Purification Method: Antigen affinity purification
Size: 100ug , Concentration: 1 mg/ml by Nanodrop;	GeneID (NCBI): 9819	
Source: Rabbit	UNIPROT ID: O75157	
Isotype: IgG	Full Name: TSC22 domain family, member 2	
Immunogen Catalog Number: AG22294	Calculated MW: 780 aa, 79 kDa	
	Observed MW: 100-110 kDa	

Applications

Tested Applications:
WB, IHC, IF/ICC, IP, Indirect ELISA

Species Specificity:
human

Background Information

TSC22D2 (transforming growth factor β -stimulated clone 22 domain family, member 2) is a member of the TSC-22 domain family comprising putative transcription factors that are characterized by a carboxy-terminal leucine zipper and an adjacent TSC-box. TSC22D2 is expressed at low levels in CRC and that TSC22D2 overexpression significantly inhibited the growth rate of cancer cells (PMID: 27573352).

Storage

Storage:
Store at -80°C.

Storage Buffer:
PBS Only

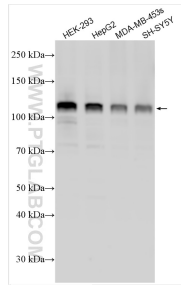
For technical support and original validation data for this product please contact:

T: 1 (888) 4PTGLAB (1-888-478-4522) (toll free in USA), or 1(312) 455-8498 (outside USA)

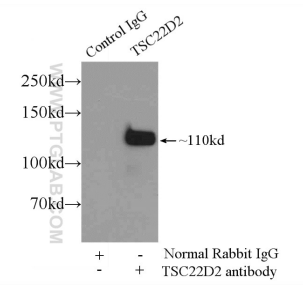
E: proteintech@ptglab.com
W: ptglab.com

This product is exclusively available under Proteintech Group brand and is not available to purchase from any other manufacturer.

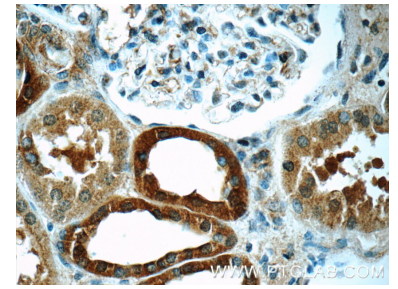
Selected Validation Data



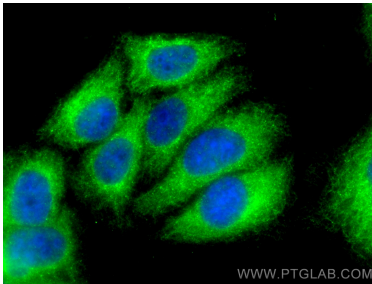
Various lysates were subjected to SDS PAGE followed by western blot with 25418-1-AP (TSC22D2 antibody) at dilution of 1:8000 incubated at room temperature for 1.5 hours. This data was developed using the same antibody clone with 25418-1-PBS in a different storage buffer formulation.



IP result of anti-TSC22D2 (IP:25418-1-AP, 5ug; Detection:25418-1-AP 1:300) with HepG2 cells lysate 2500ug. This data was developed using the same antibody clone with 25418-1-PBS in a different storage buffer formulation.



Immunohistochemical analysis of paraffin-embedded human kidney tissue slide using 25418-1-AP (TSC22D2 Antibody) at dilution of 1:50 (under 40x lens). This data was developed using the same antibody clone with 25418-1-PBS in a different storage buffer formulation.



Immunofluorescent analysis of (-20°C Ethanol) fixed HepG2 cells using TSC22D2 antibody (25418-1-AP) at dilution of 1:200 and Multi-rAb CoraLite @ Plus 488-Goat Anti-Rabbit Recombinant Secondary Antibody (H+L) (RGAR002). This data was developed using the same antibody clone with 25418-1-PBS in a different storage buffer formulation.