

For Research Use Only

# BIVM Polyclonal antibody, PBS Only

Catalog Number: 25432-1-PBS



## Basic Information

**Catalog Number:**

25432-1-PBS

**Size:**

100ug, Concentration: 1 mg/ml by Nanodrop;

**Source:**

Rabbit

**Isotype:**

IgG

**Immunogen Catalog Number:**

AG22087

**GenBank Accession Number:**

BC075084

**GeneID (NCBI):**

54841

**UNIPROT ID:**

Q86UB2

**Full Name:**

basic, immunoglobulin-like variable motif containing

**Calculated MW:**

503 aa, 57 kDa

**Observed MW:**

32 kDa

**Purification Method:**

Antigen affinity purification

## Applications

**Tested Applications:**

WB, IHC, Indirect ELISA

**Species Specificity:**

human

## Background Information

BIVM has been identified using an electronic search based on the conservation of short sequence motifs within the variable region of immunoglobulin (Ig) genes. It is tightly linked (41 bp) and in the opposite transcriptional orientation to MGC5302 (also known as KDE1 and EP58) in human. BIVM has two isoforms with MW 57 kDa and 32 kDa.

## Storage

**Storage:**

Store at -80°C.

**Storage Buffer:**

PBS only, pH7.3

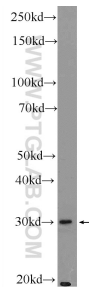
For technical support and original validation data for this product please contact:

T: 1 (888) 4PTGLAB (1-888-478-4522) (toll free in USA), or 1(312) 455-8498 (outside USA)

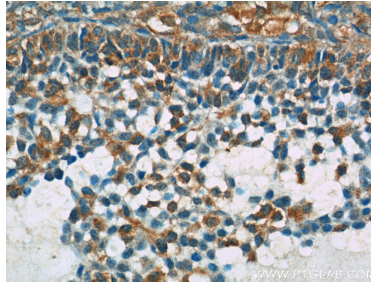
E: [proteintech@ptglab.com](mailto:proteintech@ptglab.com)  
W: [ptglab.com](http://ptglab.com)

**This product is exclusively available under Proteintech Group brand and is not available to purchase from any other manufacturer.**

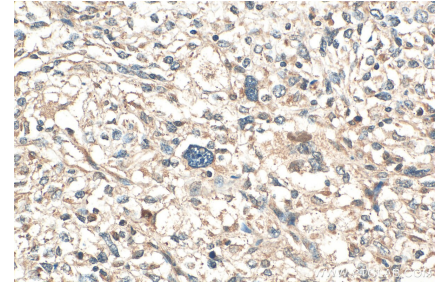
## Selected Validation Data



Raji cells were subjected to SDS PAGE followed by western blot with 25432-1-AP (BIVM Antibody) at dilution of 1:1000 incubated at room temperature for 1.5 hours. This data was developed using the same antibody clone with 25432-1-PBS in a different storage buffer formulation.



Immunohistochemical analysis of paraffin-embedded human ovary tissue slide using 25432-1-AP (BIVM Antibody) at dilution of 1:50 (under 40x lens). This data was developed using the same antibody clone with 25432-1-PBS in a different storage buffer formulation.



Immunohistochemical analysis of paraffin-embedded human pancreas cancer tissue slide using 25432-1-AP (BIVM antibody) at dilution of 1:200 (under 40x lens). Heat mediated antigen retrieval with Tris-EDTA buffer (pH 9.0). This data was developed using the same antibody clone with 25432-1-PBS in a different storage buffer formulation.