

For Research Use Only

C1orf56 Polyclonal antibody

Catalog Number: 25433-1-AP

1 Publications



Basic Information

Catalog Number: 25433-1-AP	GenBank Accession Number: BC002469	Purification Method: Antigen affinity purification
Size: 150ul , Concentration: 1200 ug/ml by Nanodrop and 407 ug/ml by Bradford method using BSA as the standard;	GeneID (NCBI): 54964	Recommended Dilutions: WB 1:500-1:1000 IHC 1:20-1:200
Source: Rabbit	UNIPROT ID: Q9BUN1	
Isotype: IgG	Full Name: chromosome 1 open reading frame 56	
Immunogen Catalog Number: AG13860	Calculated MW: 341 aa, 37 kDa	
	Observed MW: 35-37 kDa	

Applications

Tested Applications: WB, IHC, ELISA	Positive Controls: WB : mouse testis tissue, IHC : human liver cancer tissue,
Cited Applications: WB	
Species Specificity: human, mouse	
Cited Species: human	
Note-IHC: suggested antigen retrieval with TE buffer pH 9.0; (*) Alternatively, antigen retrieval may be performed with citrate buffer pH 6.0	

Background Information

C1orf56, also named as MENT, is involved in control of cellular proliferation. It is extreme expressed in several cancers especially in neuroblastoma. We detected the endogenous protein 35 kDa in mouse testis.

Notable Publications

Author	Pubmed ID	Journal	Application
Chenghao Zhanghuang	35558559	Front Mol Biosci	WB

Storage

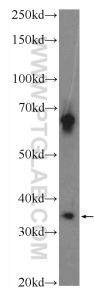
Storage:
Store at -20°C. Stable for one year after shipment.
Storage Buffer:
PBS with 0.02% sodium azide and 50% glycerol pH 7.3.
Aliquoting is unnecessary for -20°C storage

*** 20ul sizes contain 0.1% BSA

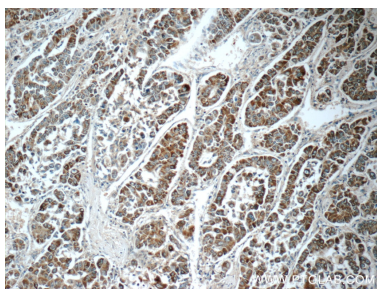
For technical support and original validation data for this product please contact:
T: 1 (888) 4PTGLAB (1-888-478-4522) (toll free in USA), or 1(312) 455-8498 (outside USA)
E: proteintech@ptglab.com
W: ptglab.com

This product is exclusively available under Proteintech Group brand and is not available to purchase from any other manufacturer.

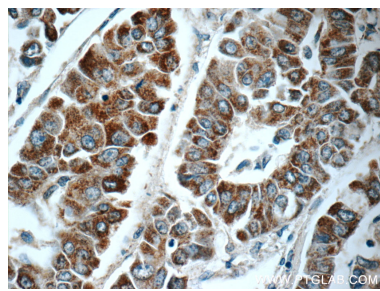
Selected Validation Data



mouse testis tissue were subjected to SDS PAGE followed by western blot with 25433-1-AP (C1orf56 Antibody) at dilution of 1:600 incubated at room temperature for 1.5 hours.



Immunohistochemical analysis of paraffin-embedded human liver cancer tissue slide using 25433-1-AP (C1orf56 Antibody) at dilution of 1:50 (under 10x lens).



Immunohistochemical analysis of paraffin-embedded human liver cancer tissue slide using 25433-1-AP (C1orf56 Antibody) at dilution of 1:50 (under 40x lens).