

For Research Use Only

# C1orf56 Polyclonal antibody, PBS Only

Catalog Number: 25433-1-PBS



## Basic Information

Catalog Number:

25433-1-PBS

Size:

100ug, Concentration: 1 mg/ml by  
Nanodrop;

Source:

Rabbit

Isotype:

IgG

Immunogen Catalog Number:

AG13860

GenBank Accession Number:

BC002469

GeneID (NCBI):

54964

UNIPROT ID:

Q9BUN1

Full Name:

chromosome 1 open reading frame 56

Calculated MW:

341 aa, 37 kDa

Observed MW:

35-37 kDa

Purification Method:

Antigen affinity purification

## Applications

Tested Applications:

WB, IHC, Indirect ELISA

Species Specificity:

human, mouse

## Background Information

C1orf56, also named as MENT, is involved in control of cellular proliferation. It is extreme expressed in several cancers especially in neuroblastoma. We detected the endogenous protein 35 kDa in mouse testis.

## Storage

Storage:

Store at -80°C.

Storage Buffer:

PBS Only

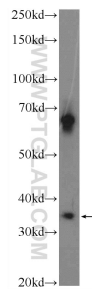
For technical support and original validation data for this product please contact:

T: 1 (888) 4PTGLAB (1-888-478-4522) (toll free  
in USA), or 1(312) 455-8498 (outside USA)

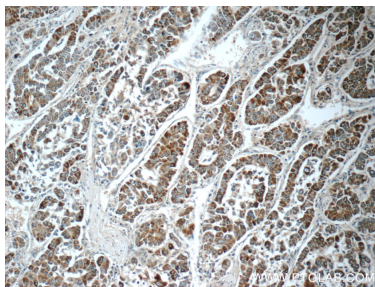
E: [proteintech@ptglab.com](mailto:proteintech@ptglab.com)  
W: [ptglab.com](http://ptglab.com)

This product is exclusively available under Proteintech Group brand and is not available to purchase from any other manufacturer.

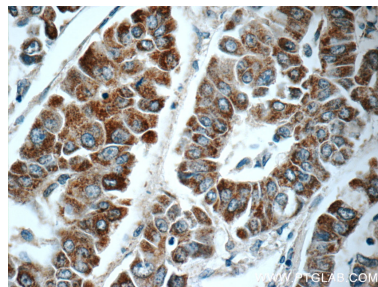
## Selected Validation Data



mouse testis tissue were subjected to SDS PAGE followed by western blot with 25433-1-AP (C1orf56 Antibody) at dilution of 1:600 incubated at room temperature for 1.5 hours. This data was developed using the same antibody clone with 25433-1-PBS in a different storage buffer formulation.



Immunohistochemical analysis of paraffin-embedded human liver cancer tissue slide using 25433-1-AP (C1orf56 Antibody) at dilution of 1:50 (under 10x lens). This data was developed using the same antibody clone with 25433-1-PBS in a different storage buffer formulation.



Immunohistochemical analysis of paraffin-embedded human liver cancer tissue slide using 25433-1-AP (C1orf56 Antibody) at dilution of 1:50 (under 40x lens). This data was developed using the same antibody clone with 25433-1-PBS in a different storage buffer formulation.