

For Research Use Only

KCTD16 Polyclonal antibody

Catalog Number: 25437-1-AP



Basic Information

Catalog Number: 25437-1-AP	GenBank Accession Number: BC113435	Purification Method: Antigen affinity purification
Size: 150ul , Concentration: 1000 µg/ml by Nanodrop and 600 µg/ml by Bradford method using BSA as the standard;	GeneID (NCBI): 57528	Recommended Dilutions: WB 1:1000-1:8000
Source: Rabbit	Full Name: potassium channel tetramerisation domain containing 16	
Isotype: IgG	Calculated MW: 428 aa, 49 kDa	
Immunogen Catalog Number: AG22064	Observed MW: 49 kDa	

Applications

Tested Applications: WB, ELISA	Positive Controls: WB : mouse brain tissue, rat brain tissue
Species Specificity: human, mouse, rat	

Background Information

Storage

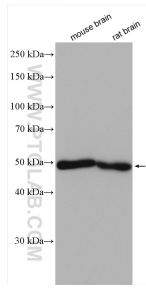
Storage:
Store at -20°C. Stable for one year after shipment.
Storage Buffer:
PBS with 0.02% sodium azide and 50% glycerol pH 7.3.
Aliquoting is unnecessary for -20°C storage

*** 20ul sizes contain 0.1% BSA

For technical support and original validation data for this product please contact:
T: 1 (888) 4PTGLAB (1-888-478-4522) (toll free in USA), or 1(312) 455-8498 (outside USA)
E: proteintech@ptglab.com
W: ptglab.com

This product is exclusively available under Proteintech Group brand and is not available to purchase from any other manufacturer.

Selected Validation Data



Various lysates were subjected to SDS PAGE followed by western blot with 25437-1-AP (KCTD16 antibody) at dilution of 1:4000 incubated at room temperature for 1.5 hours.