

For Research Use Only

# RRP36 Polyclonal antibody

Catalog Number: 25440-1-AP



## Basic Information

**Catalog Number:**

25440-1-AP

**Size:**

150ul , Concentration: 850 ug/ml by Nanodrop and 433 ug/ml by Bradford method using BSA as the standard;

**Source:**

Rabbit

**Isotype:**

IgG

**Immunogen Catalog Number:**

AG22014

**GenBank Accession Number:**

BC011933

**GeneID (NCBI):**

88745

**UNIPROT ID:**

Q96EU6

**Full Name:**

chromosome 6 open reading frame

153

**Calculated MW:**

259 aa, 30 kDa

**Observed MW:**

30-40 kDa

**Purification Method:**

Antigen affinity purification

**Recommended Dilutions:**

WB 1:500-1:1000

IF/ICC 1:50-1:500

## Applications

**Tested Applications:**

WB, IF/ICC, ELISA

**Species Specificity:**

human

**Positive Controls:**

WB : MCF-7 cells, HEK-293 cells

IF/ICC : MCF-7 cells,

## Storage

**Storage:**

Store at -20°C. Stable for one year after shipment.

**Storage Buffer:**

PBS with 0.02% sodium azide and 50% glycerol pH 7.3.

Aliquoting is unnecessary for -20°C storage

\*\*\* 20ul sizes contain 0.1% BSA

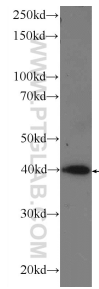
For technical support and original validation data for this product please contact:

T: 1 (888) 4PTGLAB (1-888-478-4522) (toll free in USA), or 1(312) 455-8498 (outside USA)

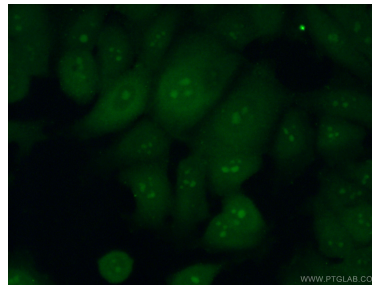
E: [proteintech@ptglab.com](mailto:proteintech@ptglab.com)  
W: [ptglab.com](http://ptglab.com)

This product is exclusively available under Proteintech Group brand and is not available to purchase from any other manufacturer.

## Selected Validation Data



MCF-7 cells were subjected to SDS PAGE followed by western blot with 25440-1-AP (RRP36 antibody) at dilution of 1:600 incubated at room temperature for 1.5 hours.



Immunofluorescent analysis of (10% Formaldehyde) fixed MCF-7 cells using 25440-1-AP (RRP36 antibody) at dilution of 1:50 and Alexa Fluor 488-conjugated Goat Anti-Rabbit IgG(H+L).