

For Research Use Only

PNPLA4 Polyclonal antibody

Catalog Number: 25469-1-AP **1 Publications**



Basic Information

Catalog Number: 25469-1-AP	GenBank Accession Number: BC020746	Purification Method: Antigen affinity purification
Size: 150ul , Concentration: 800 µg/ml by Nanodrop and 427 µg/ml by Bradford method using BSA as the standard;	GeneID (NCBI): 8228	Recommended Dilutions: WB 1:500-1:1000 IP 0.5-4.0 ug for IP and 1:200-1:1000 for WB
Source: Rabbit	Full Name: patatin-like phospholipase domain containing 4	IHC 1:50-1:500
Isotype: IgG	Calculated MW: 253 aa, 28 kDa	
Immunogen Catalog Number: AG22091	Observed MW: 28 kDa	

Applications

Tested Applications: IHC, IP, WB, ELISA	Positive Controls:
Cited Applications: WB	WB: HeLa cells,
Species Specificity: human, mouse	IP: HeLa cells,
Cited Species: mouse	IHC: human cervical cancer tissue,
Note-IHC: suggested antigen retrieval with TE buffer pH 9.0; (*) Alternatively, antigen retrieval may be performed with citrate buffer pH 6.0	

Background Information

PNPLA4 (Patatin-like phospholipase domain-containing protein 4) is also named as DXS1283E, GS2. It participate in triacylglycerol hydrolysis and the acyl-CoA independent transacylation of acylglycerols, there by facilitating energy mobilization and storage in adipocytes. This protein has 2 isoforms produced by alternative splicing.

Notable Publications

Author	Pubmed ID	Journal	Application
Ryuta Sugihara	37524709	Nat Commun	WB

Storage

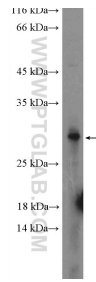
Storage:
Store at -20°C. Stable for one year after shipment.
Storage Buffer:
PBS with 0.02% sodium azide and 50% glycerol pH 7.3.
Aliquoting is unnecessary for -20°C storage

*** 20ul sizes contain 0.1% BSA

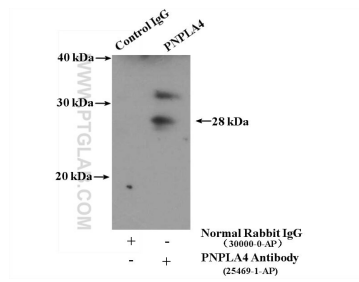
For technical support and original validation data for this product please contact:
T: 1 (888) 4PTGLAB (1-888-478-4522) (toll free in USA), or 1(312) 455-8498 (outside USA)
E: proteintech@ptglab.com
W: ptglab.com

This product is exclusively available under Proteintech Group brand and is not available to purchase from any other manufacturer.

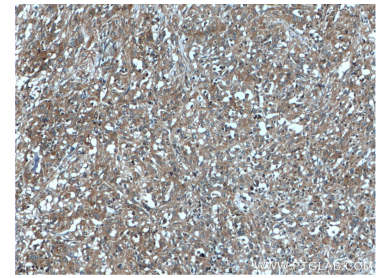
Selected Validation Data



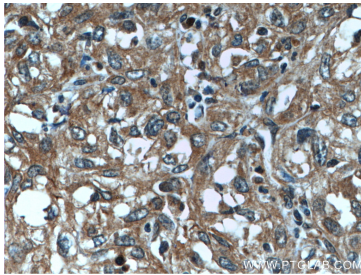
HeLa cells were subjected to SDS PAGE followed by western blot with 25469-1-AP (PNPLA4 Antibody) at dilution of 1:600 incubated at room temperature for 1.5 hours.



IP Result of anti-PNPLA4 (IP:25469-1-AP, 4ug; Detection:25469-1-AP 1:300) with HeLa cells lysate 3200ug.



Immunohistochemical analysis of paraffin-embedded human cervical cancer tissue slide using 25469-1-AP (PNPLA4 antibody) at dilution of 1:200 (under 10x lens).



Immunohistochemical analysis of paraffin-embedded human cervical cancer tissue slide using 25469-1-AP (PNPLA4 antibody) at dilution of 1:200 (under 40x lens).