

For Research Use Only

CTGF Polyclonal antibody

Catalog Number: 25474-1-AP

38 Publications



Basic Information

Catalog Number:

25474-1-AP

Size:

150ul, Concentration: 500 ug/ml by Nanodrop;

Source:

Rabbit

Isotype:

IgG

GenBank Accession Number:

NM_001901

GeneID (NCBI):

1490

UNIPROT ID:

P29279

Full Name:

connective tissue growth factor

Calculated MW:

38 kDa

Observed MW:

35 kDa

Purification Method:

Antigen affinity purification

Recommended Dilutions:

WB 1:1000-1:8000

IP 0.5-4.0 ug for 1.0-3.0 mg of total protein lysate

Applications

Tested Applications:

WB, FC (Intra), IP, ELISA

Cited Applications:

WB, IHC, IF

Species Specificity:

human

Cited Species:

human, mouse, rat, pig, canine, goat

Positive Controls:

WB : HUVEC cells, HeLa cells, MG-63 cells, U2OS cells

IP : HUVEC cells,

Background Information

CTGF, also known as CCN2, is a member of the CCN family of matricellular proteins. CTGF, a cysteine-rich, matrix-associated, heparin-binding protein, is widely expressed in various human tissues and organs. CTGF has important roles in many biological processes, including cell adhesion, migration, proliferation, angiogenesis, skeletal development, and tissue wound repair, and is critically involved in fibrotic disease and several forms of cancers.

Notable Publications

Author	Pubmed ID	Journal	Application
Tsung-Teng Huang	36267283	Front Pharmacol	WB, IHC
Chenyang Qi	36375573	Life Sci	WB
Youcheng Wang	36483596	Int J Med Sci	WB

Storage

Storage:

Store at -20°C. Stable for one year after shipment.

Storage Buffer:

PBS with 0.02% sodium azide and 50% glycerol, pH7.3

Aliquoting is unnecessary for -20°C storage

*** 20ul sizes contain 0.1% BSA

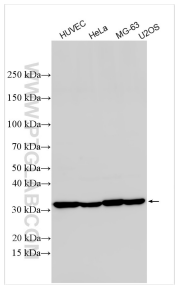
For technical support and original validation data for this product please contact:

T: 1 (888) 4PTGLAB (1-888-478-4522) (toll free in USA), or 1(312) 455-8498 (outside USA)

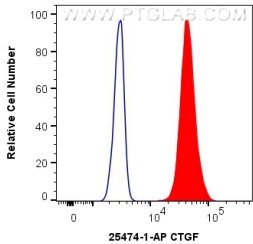
E: proteintech@ptglab.com
W: ptglab.com

This product is exclusively available under Proteintech Group brand and is not available to purchase from any other manufacturer.

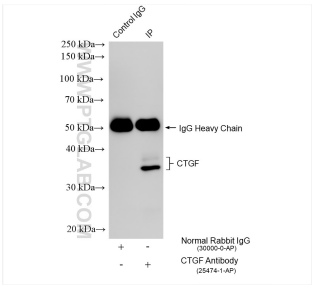
Selected Validation Data



Various lysates were subjected to SDS PAGE followed by western blot with 25474-1-AP (CTGF antibody) at dilution of 1:4000 incubated at room temperature for 1.5 hours.



1X10⁶ HuH-7 cells were intracellularly stained with 0.4 ug Anti-Human CTGF (25474-1-AP) and CoraLite®488-Conjugated AffiniPure Goat Anti-Rabbit IgG(H+L) at dilution 1:1000 (red), or 0.4 ug Isotype Control. Cells were fixed with 4% PFA and permeabilized with Flow Cytometry Perm Buffer (PF00011-C).



IP result of anti-CTGF (IP:25474-1-AP, 4ug; Detection:25474-1-AP 1:1000) with HUVEC cells lysate 1440 ug.