

For Research Use Only

TMEM24 Polyclonal antibody

Catalog Number: 25507-1-AP **1 Publications**



Basic Information

Catalog Number: 25507-1-AP	GenBank Accession Number: BC022219	Purification Method: Antigen affinity purification
Size: 150ul , Concentration: 800 µg/ml by Nanodrop and 287 µg/ml by Bradford method using BSA as the standard;	GeneID (NCBI): 9854	Recommended Dilutions: WB 1:500-1:2000 IHC 1:50-1:500
Source: Rabbit	Full Name: C2CD2-like	
Isotype: IgG	Calculated MW: 706 aa, 76 kDa	
Immunogen Catalog Number: AG21913	Observed MW: 80-100 kDa	

Applications

Tested Applications: IHC, WB, ELISA	Positive Controls: WB : HeLa cells, IHC : human pancreas cancer tissue,
Cited Applications: IF	
Species Specificity: human, mouse	
Cited Species: human	
Note-IHC: suggested antigen retrieval with TE buffer pH 9.0; (*) Alternatively, antigen retrieval may be performed with citrate buffer pH 6.0	

Background Information

TMEM24, also named as KIAA0285 and C2CD2L, is identified as a pancreatic islet-enriched protein that plays a key role in regulating glucose-sensitive INS release from the reserve pool of granules. This antibody detects TMEM24 protein with MW 70-100 kDa.

Notable Publications

Author	Pubmed ID	Journal	Application
Robert S Kiss	37774976	J Biol Chem	IF

Storage

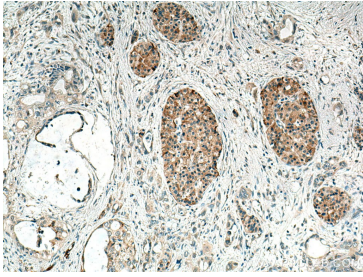
Storage:
Store at -20°C. Stable for one year after shipment.
Storage Buffer:
PBS with 0.02% sodium azide and 50% glycerol pH 7.3.
Aliquoting is unnecessary for -20°C storage

*** 20ul sizes contain 0.1% BSA

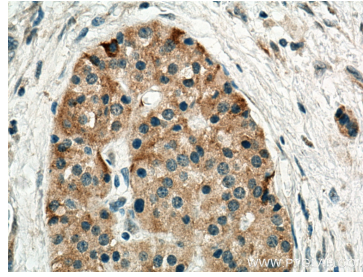
For technical support and original validation data for this product please contact:
T: 1 (888) 4PTGLAB (1-888-478-4522) (toll free in USA), or 1(312) 455-8498 (outside USA)
E: proteintech@ptglab.com
W: ptglab.com

This product is exclusively available under Proteintech Group brand and is not available to purchase from any other manufacturer.

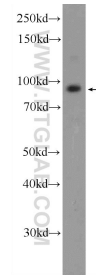
Selected Validation Data



Immunohistochemical analysis of paraffin-embedded human pancreas cancer tissue slide using 25507-1-AP (TMEM24 antibody) at dilution of 1:200 (under 10x lens). Heat mediated antigen retrieval with Tris-EDTA buffer (pH 9.0).



Immunohistochemical analysis of paraffin-embedded human pancreas cancer tissue slide using 25507-1-AP (TMEM24 antibody) at dilution of 1:200 (under 40x lens). Heat mediated antigen retrieval with Tris-EDTA buffer (pH 9.0).



HeLa cells were subjected to SDS PAGE followed by western blot with 25507-1-AP (TMEM24 antibody) at dilution of 1:1000 incubated at room temperature for 1.5 hours.