

For Research Use Only

LYPD6B Polyclonal antibody, PBS Only

Catalog Number: 25508-1-PBS



Basic Information

Catalog Number: 25508-1-PBS	GenBank Accession Number: BC040176	Purification Method: Antigen affinity purification
Size: 100ug, Concentration: 1 mg/ml by Nanodrop;	GeneID (NCBI): 130576	
Source: Rabbit	UNIPROT ID: Q8NI32	
Isotype: IgG	Full Name: LY6/PLAUR domain containing 6B	
Immunogen Catalog Number: AG22008	Calculated MW: 183 aa, 20 kDa	

Applications

Tested Applications:
IHC, Indirect ELISA

Species Specificity:
human, mouse

Background Information

LYPD6B (containing the Ly6/PLAUR domain protein 6B), also known as LYPD7, is a member of the Ly6/uPAR superfamily of proteins. These proteins typically exhibit membrane-anchoring properties and participate in critical cellular signaling and adhesion processes. It is predominantly expressed in the central nervous system. LYPD6B functions as a key regulatory subunit that interacts with and modulates nicotinic acetylcholine receptors (nAChRs), specifically influencing their maturation, stability, and functional properties at synapses. This interaction is crucial for normal cholinergic signaling, which underpins cognitive functions such as learning and memory. Dysfunction of the LYPD6B is associated with multiple neurological disorders. (PMID: 23186997, PMID: 34631692, PMID: 39433742)

Storage

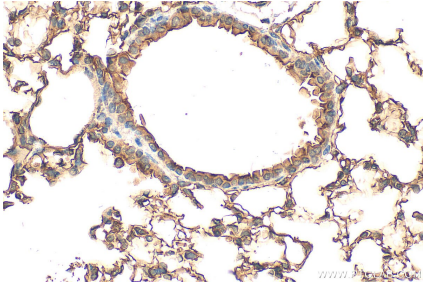
Storage:
Store at -80°C.

Storage Buffer:
PBS only, pH7.3

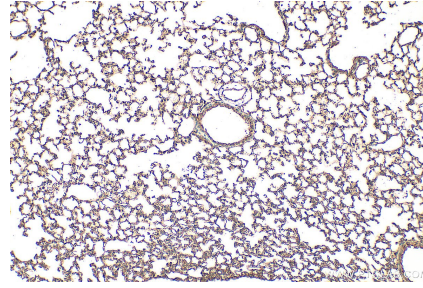
For technical support and original validation data for this product please contact:
T: 1 (888) 4PTGLAB (1-888-478-4522) (toll free in USA), or 1(312) 455-8498 (outside USA) E: proteintech@ptglab.com
W: ptglab.com

This product is exclusively available under Proteintech Group brand and is not available to purchase from any other manufacturer.

Selected Validation Data



Immunohistochemical analysis of paraffin-embedded mouse lung tissue slide using 25508-1-AP (LYPD6B antibody) at dilution of 1:200 (under 40x lens). Heat mediated antigen retrieval with Tris-EDTA buffer (pH 9.0). This data was developed using the same antibody clone with 25508-1-PBS in a different storage buffer formulation.



Immunohistochemical analysis of paraffin-embedded mouse lung tissue slide using 25508-1-AP (LYPD6B antibody) at dilution of 1:200 (under 10x lens). Heat mediated antigen retrieval with Tris-EDTA buffer (pH 9.0). This data was developed using the same antibody clone with 25508-1-PBS in a different storage buffer formulation.