

For Research Use Only

# PAI-1 Polyclonal antibody

Catalog Number: 25522-1-AP **1 Publications**



## Basic Information

<b>Catalog Number:</b> 25522-1-AP	<b>GenBank Accession Number:</b> BC010860	<b>Purification Method:</b> Antigen affinity purification
<b>Size:</b> 150ul , Concentration: 193 µg/ml by Bradford method using BSA as the standard;	<b>GeneID (NCBI):</b> 5054	<b>Recommended Dilutions:</b> WB 1:200-1:1000 IF 1:10-1:100
<b>Source:</b> Rabbit	<b>Full Name:</b> serpin peptidase inhibitor, clade E (nexin, plasminogen activator inhibitor type 1), member 1	
<b>Isotype:</b> IgG	<b>Calculated MW:</b> 402 aa, 45 kDa	
<b>Immunogen Catalog Number:</b> AG22411		

## Applications

<b>Tested Applications:</b> IF, WB, ELISA	<b>Positive Controls:</b> WB : RAW 264.7 cells, human plasma tissue
<b>Cited Applications:</b> IHC	<b>IF :</b> HepG2 cells,
<b>Species Specificity:</b> human, mouse	
<b>Cited Species:</b> human	

## Background Information

SERPINE1, also named as Plasminogen activator inhibitor type 1 (PAI-1), is a member of the serine protease inhibitor (SERPIN) superfamily. PAI-1 is the principal inhibitor of tissue plasminogen activator (tPA) and uPA, and hence is an inhibitor of fibrinolysis. Defects in this gene are the cause of plasminogen activator inhibitor-1 deficiency (PAI-1 deficiency), and high concentrations of the gene product are associated with thrombophilia.

## Notable Publications

Author	Pubmed ID	Journal	Application
Jingyao Chen	37274740	Front Cell Dev Biol	IHC

## Storage

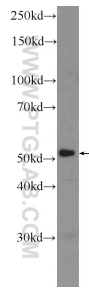
**Storage:**  
Store at -20°C. Stable for one year after shipment.  
**Storage Buffer:**  
PBS with 0.02% sodium azide and 50% glycerol pH 7.3.  
Aliquoting is unnecessary for -20°C storage

\*\*\* 20ul sizes contain 0.1% BSA

For technical support and original validation data for this product please contact:  
T: 1 (888) 4PTGLAB (1-888-478-4522) (toll free in USA), or 1(312) 455-8498 (outside USA)  
E: proteintech@ptglab.com  
W: ptglab.com

This product is exclusively available under Proteintech Group brand and is not available to purchase from any other manufacturer.

## Selected Validation Data



RAW 264.7 cells were subjected to SDS PAGE followed by western blot with 25522-1-AP (PAI-1 antibody at dilution of 1:300 incubated at room temperature for 1.5 hours.