

For Research Use Only

SLC35F2 Polyclonal antibody

Catalog Number: 25526-1-AP

Featured Product

5 Publications



Basic Information

Catalog Number:

25526-1-AP

Size:

150ul, Concentration: 600 ug/ml by Nanodrop and 307 ug/ml by Bradford method using BSA as the standard;

Source:

Rabbit

Isotype:

IgG

Immunogen Catalog Number:

AG20901

GenBank Accession Number:

BC039195

GeneID (NCBI):

54733

UNIPROT ID:

Q8IXU6

Full Name:

solute carrier family 35, member F2

Calculated MW:

374 aa, 41 kDa

Observed MW:

41-50 kDa

Purification Method:

Antigen affinity purification

Recommended Dilutions:

WB 1:500-1:1000

Applications

Tested Applications:

WB, ELISA

Cited Applications:

WB, IP

Species Specificity:

human, mouse

Cited Species:

human

Positive Controls:

WB: A549 cells, mouse brain tissue

Background Information

SLC35F2, also named as Solute carrier family 35 member F2, is a 374 amino acid protein, which belongs to the SLC35F solute transporter family. SLC35F2 as a Multi-pass membrane protein is a putative solute transporter. SLC35F2 is highly homologous to the lung squamous cell cancer-related gene, LSCC3, which is highly expressed in lung squamous cell tumour tissues. However, the clinical implication of the SLC35F2 gene in tumour development and progression remains unclear.

Notable Publications

Author	Pubmed ID	Journal	Application
Arun Pandian Chandrasekaran	34815782	Theranostics	WB
Mei Chen	31849485	Onco Targets Ther	WB
Jencia Carminha Colaco	37801987	Biochem Biophys Res Commun	WB,IP

Storage

Storage:

Store at -20°C. Stable for one year after shipment.

Storage Buffer:

PBS with 0.02% sodium azide and 50% glycerol pH 7.3.

Aliquoting is unnecessary for -20°C storage

*** 20ul sizes contain 0.1%BSA

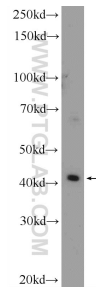
For technical support and original validation data for this product please contact:

T: 1 (888) 4PTGLAB (1-888-478-4522) (toll free in USA), or 1(312) 455-8498 (outside USA)

E: proteintech@ptglab.com
W: ptglab.com

This product is exclusively available under Proteintech Group brand and is not available to purchase from any other manufacturer.

Selected Validation Data



A549 cells were subjected to SDS PAGE followed by western blot with 25526-1-AP (SLC35F2 Antibody) at dilution of 1:600 incubated at room temperature for 1.5 hours.