

For Research Use Only

WDR76 Polyclonal antibody

Catalog Number: 25528-1-AP

2 Publications



Basic Information

Catalog Number:

25528-1-AP

Size:

150ul, Concentration: 500 ug/ml by Nanodrop and 313 ug/ml by Bradford method using BSA as the standard;

Source:

Rabbit

Isotype:

IgG

Immunogen Catalog Number:

AG22114

GenBank Accession Number:

BC051855

GeneID (NCBI):

79968

UNIPROT ID:

Q9H967

Full Name:

WD repeat domain 76

Calculated MW:

626 aa, 70 kDa

Observed MW:

70 kDa

Purification Method:

Antigen affinity purification

Recommended Dilutions:

WB 1:200-1:1000

Applications

Tested Applications:

WB, ELISA

Cited Applications:

WB, IHC, IF, RIP

Species Specificity:

human

Cited Species:

human

Positive Controls:

WB: HeLa cells,

Background Information

WD40 repeat protein 76 (WDR76) is identified as a novel tumor suppressor and RAS activity can be controlled via regulating protein stability which further affect the tumorigenesis and metastasis in different cancer diseases.

Notable Publications

Author	Pubmed ID	Journal	Application
Shuai Mei	39219022	Cell Prolif	WB, RIP, IF
Yuanhang Yu	38372449	Clin Transl Med	WB, IHC

Storage

Storage:

Store at -20°C. Stable for one year after shipment.

Storage Buffer:

PBS with 0.02% sodium azide and 50% glycerol pH 7.3.

Aliquoting is unnecessary for -20°C storage

*** 20ul sizes contain 0.1% BSA

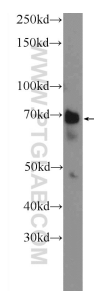
For technical support and original validation data for this product please contact:

T: 1 (888) 4PTGLAB (1-888-478-4522) (toll free in USA), or 1(312) 455-8498 (outside USA)

E: proteintech@ptglab.com
W: ptglab.com

This product is exclusively available under Proteintech Group brand and is not available to purchase from any other manufacturer.

Selected Validation Data



HeLa cells were subjected to SDS PAGE followed by western blot with 25528-1-AP (WDR76 Antibody) at dilution of 1:300 incubated at room temperature for 1.5 hours.