

For Research Use Only

WDR76 Polyclonal antibody, PBS Only

Catalog Number: 25528-1-PBS



Basic Information

Catalog Number:

25528-1-PBS

Size:

100ug, Concentration: 1 mg/ml by Nanodrop;

Source:

Rabbit

Isotype:

IgG

Immunogen Catalog Number:

AG22114

GenBank Accession Number:

BC051855

GeneID (NCBI):

79968

UNIPROT ID:

Q9H967

Full Name:

WD repeat domain 76

Calculated MW:

626 aa, 70 kDa

Observed MW:

70 kDa

Purification Method:

Antigen affinity purification

Applications

Tested Applications:

WB, IF/ICC, Indirect ELISA

Species Specificity:

human

Background Information

WD40 repeat protein 76 (WDR76) is identified as a novel tumor suppressor and RAS activity can be controlled via regulating protein stability which further affect the tumorigenesis and metastasis in different cancer diseases.

Storage

Storage:

Store at -80°C.

Storage Buffer:

PBS only, pH7.3

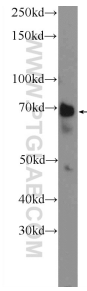
For technical support and original validation data for this product please contact:

T: 1 (888) 4PTGLAB (1-888-478-4522) (toll free in USA), or 1(312) 455-8498 (outside USA)

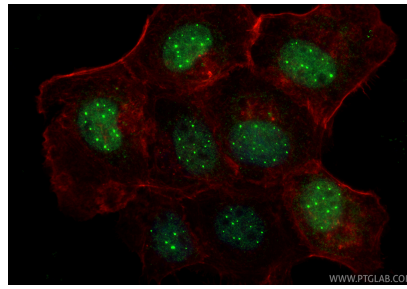
E: proteintech@ptglab.com
W: ptglab.com

This product is exclusively available under Proteintech Group brand and is not available to purchase from any other manufacturer.

Selected Validation Data



HeLa cells were subjected to SDS PAGE followed by western blot with 25528-1-AP (WDR76 Antibody) at dilution of 1:300 incubated at room temperature for 1.5 hours. This data was developed using the same antibody clone with 25528-1-PBS in a different storage buffer formulation.



Immunofluorescent analysis of (4% PFA) fixed A431 cells using WDR76 antibody (25528-1-AP) at dilution of 1:1000 and CoraLite®488-Conjugated Goat Anti-Rabbit IgG(H+L) (SA00013-2), CL594-Phalloidin (red). This data was developed using the same antibody clone with 25528-1-PBS in a different storage buffer formulation.