

For Research Use Only

KANSL3 Polyclonal antibody

Catalog Number: 25533-1-AP



Basic Information

Catalog Number: 25533-1-AP	GenBank Accession Number: BC063792	Purification Method: Antigen affinity purification
Size: 150ul , Concentration: 700 ug/ml by Nanodrop;	GeneID (NCBI): 55683	Recommended Dilutions: WB 1:1000-1:5000 IHC 1:50-1:500
Source: Rabbit	UNIPROT ID: Q9P2N6	
Isotype: IgG	Full Name: KIAA1310	
Immunogen Catalog Number: AG22117	Calculated MW: 878 aa, 93 kDa	
	Observed MW: 105 kDa	

Applications

Tested Applications: WB, IHC, ELISA	Positive Controls:
Species Specificity: human	WB : HEK-293 cells, Jurkat cells, U2OS cells
Note-IHC: suggested antigen retrieval with TE buffer pH 9.0; (*) Alternatively, antigen retrieval may be performed with citrate buffer pH 6.0	IHC : human intrahepatic cholangiocarcinoma tissue,

Background Information

KANSL3, or KAT8-associated nonspecific lethal complex subunit 3, is a component of the KANSL complex, which is an important chromatin modifier in higher animals. This complex plays a crucial role in regulating housekeeping genes and is highly conserved across species. KANSL3, along with other KANSL complex members, is essential for cell division and has been shown to interact robustly both in vitro and in vivo. KANSL3 has been found to have a dual role in cellular function. In interphase, KANSL3 is chromatin-bound and regulates the expression of housekeeping genes. During mitosis, KANSL3 relocates to the mitotic spindle and is important for cell division. It has been identified as a microtubule minus-end-binding protein, which is a novel function for a chromatin-binding complex. KANSL3's ability to bind directly to microtubule minus ends is significant, as very few proteins are known to perform this function.

Storage

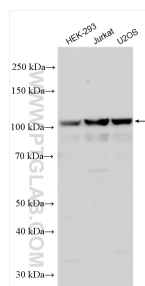
Storage:
Store at -20°C. Stable for one year after shipment.
Storage Buffer:
PBS with 0.02% sodium azide and 50% glycerol pH 7.3.
Aliquoting is unnecessary for -20°C storage

*** 20ul sizes contain 0.1% BSA

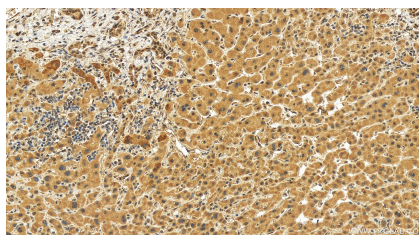
For technical support and original validation data for this product please contact:
T: 1 (888) 4PTGLAB (1-888-478-4522) (toll free in USA), or 1(312) 455-8498 (outside USA)
E: proteintech@ptglab.com
W: ptglab.com

This product is exclusively available under Proteintech Group brand and is not available to purchase from any other manufacturer.

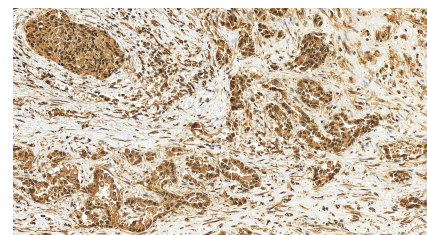
Selected Validation Data



Various lysates were subjected to SDS PAGE followed by western blot with 25533-1-AP (KANSL3 antibody) at dilution of 1:3000 incubated at room temperature for 1.5 hours.



Immunohistochemical analysis of paraffin-embedded human intrahepatic cholangiocarcinoma tissue slide using 25533-1-AP (KANSL3 antibody) at dilution of 1:200 (under 20x lens). Heat mediated antigen retrieval with Tris-EDTA buffer (pH 9.0).



Immunohistochemical analysis of paraffin-embedded human intrahepatic cholangiocarcinoma tissue slide using 25533-1-AP (KANSL3 antibody) at dilution of 1:200 (under 20x lens). Heat mediated antigen retrieval with Tris-EDTA buffer (pH 9.0).