

For Research Use Only

# KANSL3 Polyclonal antibody, PBS Only

Catalog Number: 25533-1-PBS



## Basic Information

**Catalog Number:**

25533-1-PBS

**Size:**

100ug, Concentration: 1 mg/ml by Nanodrop;

**Source:**

Rabbit

**Isotype:**

IgG

**Immunogen Catalog Number:**

AG22117

**GenBank Accession Number:**

BC063792

**GeneID (NCBI):**

55683

**UNIPROT ID:**

Q9P2N6

**Full Name:**

KIAA1310

**Calculated MW:**

878 aa, 93 kDa

**Observed MW:**

105 kDa

**Purification Method:**

Antigen affinity purification

## Applications

**Tested Applications:**

WB, IHC, Indirect ELISA

**Species Specificity:**

human

## Background Information

KANSL3, or KAT8-associated nonspecific lethal complex subunit 3, is a component of the KANSL complex, which is an important chromatin modifier in higher animals. This complex plays a crucial role in regulating housekeeping genes and is highly conserved across species. KANSL3, along with other KANSL complex members, is essential for cell division and has been shown to interact robustly both in vitro and in vivo. KANSL3 has been found to have a dual role in cellular function. In interphase, KANSL3 is chromatin-bound and regulates the expression of housekeeping genes. During mitosis, KANSL3 relocates to the mitotic spindle and is important for cell division. It has been identified as a microtubule minus-end-binding protein, which is a novel function for a chromatin-binding complex. KANSL3's ability to bind directly to microtubule minus ends is significant, as very few proteins are known to perform this function.

## Storage

**Storage:**

Store at -80°C.

**Storage Buffer:**

PBS Only

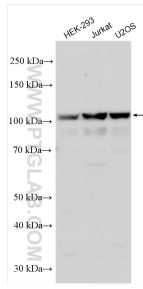
For technical support and original validation data for this product please contact:

T: 1 (888) 4PTGLAB (1-888-478-4522) (toll free in USA), or 1(312) 455-8498 (outside USA)

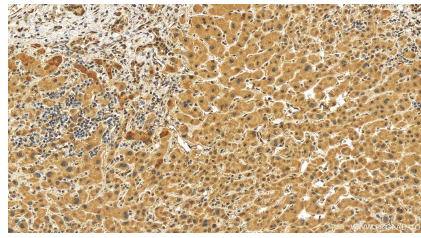
E: [proteintech@ptglab.com](mailto:proteintech@ptglab.com)  
W: [ptglab.com](http://ptglab.com)

**This product is exclusively available under Proteintech Group brand and is not available to purchase from any other manufacturer.**

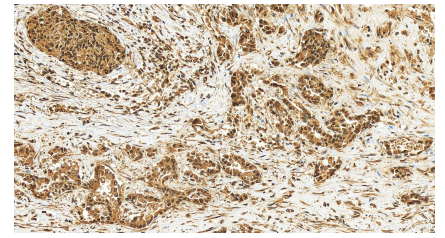
## Selected Validation Data



Various lysates were subjected to SDS PAGE followed by western blot with 25533-1-AP (KANSL3 antibody) at dilution of 1:3000 incubated at room temperature for 1.5 hours. This data was developed using the same antibody clone with 25533-1-PBS in a different storage buffer formulation.



Immunohistochemical analysis of paraffin-embedded human intrahepatic cholangiocarcinoma tissue slide using 25533-1-AP (KANSL3 antibody) at dilution of 1:200 (under 20x lens). Heat mediated antigen retrieval with Tris-EDTA buffer (pH 9.0). This data was developed using the same antibody clone with 25533-1-PBS in a different storage buffer formulation.



Immunohistochemical analysis of paraffin-embedded human intrahepatic cholangiocarcinoma tissue slide using 25533-1-AP (KANSL3 antibody) at dilution of 1:200 (under 20x lens). Heat mediated antigen retrieval with Tris-EDTA buffer (pH 9.0). This data was developed using the same antibody clone with 25533-1-PBS in a different storage buffer formulation.