

For Research Use Only

MCP-1/CCL2 Polyclonal antibody

Catalog Number: 25542-1-AP

66 Publications



Basic Information

| | | |
|---|---|---|
| Catalog Number: 25542-1-AP | GenBank Accession Number: BC009716 | Purification Method: Antigen affinity purification |
| Size: 150ul , Concentration: 600 µg/ml by Nanodrop; | GeneID (NCBI): 6347 | Recommended Dilutions: WB 1:1000-1:4000 IHC 1:50-1:500 |
| Source: Rabbit | UNIPROT ID: P13500 | |
| Isotype: IgG | Full Name: chemokine (C-C motif) ligand 2 | |
| Immunogen Catalog Number: AG10601 | Calculated MW: 99 aa, 11 kDa | |
| | Observed MW: 11 kDa | |

Applications

| | |
|--|--|
| Tested Applications: IHC, ELISA | Positive Controls: WB : PMA, LPS and Brefeldin A treated THP-1 cells, IHC : human breast cancer tissue, human pancreas cancer tissue, human liver cancer tissue |
| Cited Applications: IHC, IF, Blocking | |
| Species Specificity: human | |
| Cited Species: human, rabbit | |
| Note-IHC: suggested antigen retrieval with TE buffer pH 9.0; (*) Alternatively, antigen retrieval may be performed with citrate buffer pH 6.0 | |

Background Information

Monocyte chemoattractant protein 1 (MCP1; also known as CCL2), is a chemokine that can be expressed in monocytes, macrophages, and endothelial cells, and belongs to the CC subfamily of chemokines. Chemokines are a superfamily of secreted proteins involved in immunoregulatory and inflammatory processes. Research has shown that the expression of MCP1 increases in the serum of patients with acute myocarditis. MCP1 is up-regulated in many types of CNS injury, including ischemia, hemorrhage, trauma, infection, hypoxia, and peripheral nerve axotomy. MCP1 has also been implicated in the pathogenesis of diseases characterized by monocytic infiltrates, such as psoriasis, rheumatoid arthritis, and atherosclerosis.

Notable Publications

| Author | Pubmed ID | Journal | Application |
|-------------|-----------|-------------------------------|-------------|
| Yun Zhu | 31660067 | Theranostics | IHC |
| Xiaojuan Ma | 32900249 | J Recept Signal Transduct Res | |
| Jiajun Chen | 36367498 | Life Sci | IHC,IF |

Storage

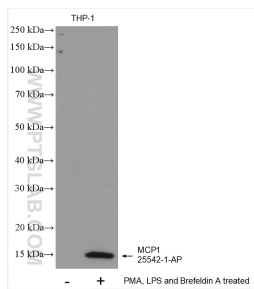
Storage:
Store at -20°C. Stable for one year after shipment.
Storage Buffer:
PBS with 0.02% sodium azide and 50% glycerol, pH7.3
Aliquoting is unnecessary for -20°C storage

*** 20ul sizes contain 0.1% BSA

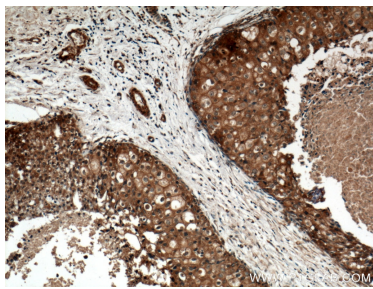
For technical support and original validation data for this product please contact:
T: 1 (888) 4PTGLAB (1-888-478-4522) (toll free in USA), or 1(312) 455-8498 (outside USA)
E: proteintech@ptglab.com
W: ptglab.com

This product is exclusively available under Proteintech Group brand and is not available to purchase from any other manufacturer.

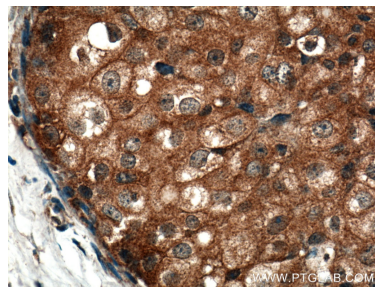
Selected Validation Data



Untreated THP-1 cells, THP-1 cells (treated with 50 nM PMA and 5 ug/ml LPS for 24 hours, with addition of 300ng/ml Brefeldin A for the last 3 hours.) were subjected to SDS PAGE followed by western blot with 25542-1-AP (MCP1 antibody) at dilution of 1:2000 incubated at room temperature for 1.5 hours.



Immunohistochemical analysis of paraffin-embedded human breast cancer tissue slide using 25542-1-AP (MCP1 antibody) at dilution of 1:200 (under 10x lens).



Immunohistochemical analysis of paraffin-embedded human breast cancer tissue slide using 25542-1-AP (MCP1 antibody) at dilution of 1:200 (under 40x lens).