

For Research Use Only

SCML2 Polyclonal antibody

Catalog Number: 25544-1-AP

Featured Product



Basic Information

Catalog Number: 25544-1-AP	GenBank Accession Number: BC064617	Purification Method: Antigen affinity purification
Size: 150ul, Concentration: 1000 µg/ml by Nanodrop and 480 µg/ml by Bradford method using BSA as the standard;	GeneID (NCBI): 10389	Recommended Dilutions: WB 1:500-1:1000 IP 0.5-4.0 ug for IP and 1:200-1:1000 for WB
Source: Rabbit	Full Name: sex comb on midleg-like 2 (Drosophila)	IF 1:20-1:200
Isotype: IgG	Calculated MW: 700 aa, 77 kDa	
Immunogen Catalog Number: AG22271	Observed MW: 70 kDa, 80 kDa	

Applications

Tested Applications: IF, IP, WB, ELISA	Positive Controls:
Species Specificity: human, mouse	WB : HEK-293 cells, mouse testis tissue, K-562 cells
	IP : HEK-293 cells,
	IF : HEK-293 cells,

Background Information

The human SCML2 gene, a mammalian homologue of the Drosophila PcG protein SCM, encodes two protein isoforms: SCML2A that is bound to chromatin and SCML2B that is predominantly nucleoplasmic (PMID: 24358021). Polycomb repressive complex-1 (PRC1) is essential for the epigenetic regulation of gene expression. SCML2 is a Polycomb-group protein that associates with PRC1. SCML2 participates in the epigenetic control of transcription directly and in cooperation with PRC1 (PMID: 24986859).

Storage

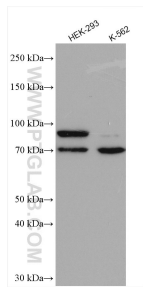
Storage:
Store at -20°C. Stable for one year after shipment.
Storage Buffer:
PBS with 0.02% sodium azide and 50% glycerol pH 7.3.
Aliquoting is unnecessary for -20°C storage

*** 20ul sizes contain 0.1% BSA

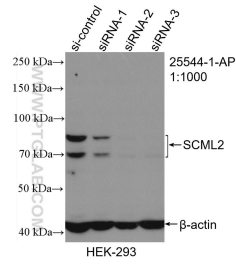
For technical support and original validation data for this product please contact:
T: 1 (888) 4PTGLAB (1-888-478-4522) (toll free in USA), or 1(312) 455-8498 (outside USA)
E: proteintech@ptglab.com
W: ptglab.com

This product is exclusively available under Proteintech Group brand and is not available to purchase from any other manufacturer.

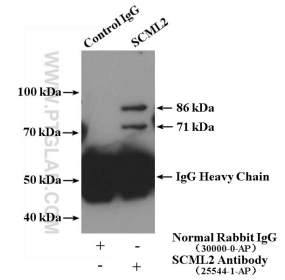
Selected Validation Data



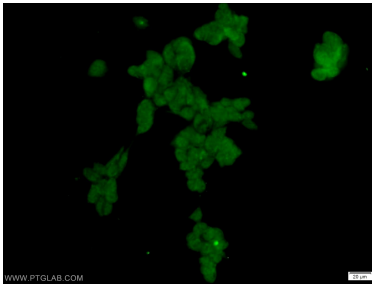
Various lysates were subjected to SDS PAGE followed by western blot with 25544-1-AP (SCML2 antibody) at dilution of 1:800 incubated at room temperature for 1.5 hours.



WB result of SCML2 antibody (25544-1-AP; 1:1000; incubated at room temperature for 1.5 hours) with sh-Control and sh-SCML2 transfected HEK-293 cells.



IP Result of anti-SCML2 (IP:25544-1-AP, 4ug; Detection:25544-1-AP 1:300) with HEK-293 cells lysate 2400ug.



Immunofluorescent analysis of HEK-293 cells using 25544-1-AP (SCML2 antibody) at dilution of 1:50 and Alexa Fluor 488-conjugated AffiniPure Goat Anti-Rabbit IgG(H+L).