

For Research Use Only

METTL18 Polyclonal antibody

Catalog Number: 25553-1-AP

2 Publications



Basic Information

Catalog Number:

25553-1-AP

Size:

150ul, Concentration: 260 ug/ml by Nanodrop and 193 ug/ml by Bradford method using BSA as the standard;

Source:

Rabbit

Isotype:

IgG

Immunogen Catalog Number:

AG22148

GenBank Accession Number:

BC008679

GeneID (NCBI):

92342

UNIPROT ID:

O95568

Full Name:

chromosome 1 open reading frame 156

Calculated MW:

372 aa, 42 kDa

Observed MW:

45-50 kDa

Purification Method:

Antigen affinity purification

Recommended Dilutions:

WB 1:200-1:1000

IF/ICC 1:200-1:800

Applications

Tested Applications:

WB, IF/ICC, ELISA

Cited Applications:

WB

Species Specificity:

human

Cited Species:

human

Positive Controls:

WB : A431 cells, PC-3 cells

IF/ICC : A431 cells,

Background Information

METTL18 belongs to a family of protein lysine methyltransferases that methylate nonhistone proteins. Methyltransferases catalyze the transfer of a methyl group from a donor, generally S-adenosyl-L-methionine, to acceptor molecules, including proteins, DNA, RNA, lipids, and small metabolites. METTL18 is involved in peptidyl-lysine monomethylation.

Notable Publications

Author	Pubmed ID	Journal	Application
Tian-Hao Li	34123827	Front Oncol	WB
Eriko Matsuura-Suzuki	35674491	Elife	WB

Storage

Storage:

Store at -20°C. Stable for one year after shipment.

Storage Buffer:

PBS with 0.02% sodium azide and 50% glycerol pH 7.3.

Aliquoting is unnecessary for -20°C storage

*** 20ul sizes contain 0.1% BSA

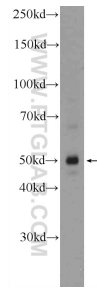
For technical support and original validation data for this product please contact:

T: 1 (888) 4PTGLAB (1-888-478-4522) (toll free in USA), or 1(312) 455-8498 (outside USA)

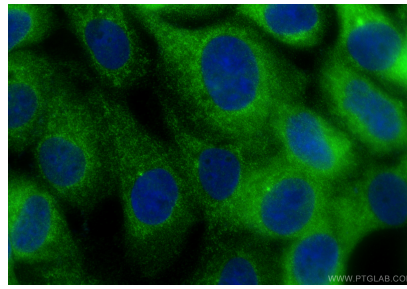
E: proteintech@ptglab.com
W: ptglab.com

This product is exclusively available under Proteintech Group brand and is not available to purchase from any other manufacturer.

Selected Validation Data



A431 cells were subjected to SDS PAGE followed by western blot with 25553-1-AP (C1orf156 Antibody) at dilution of 1:300 incubated at room temperature for 1.5 hours.



Immunofluorescent analysis of (-20°C Methanol) fixed A431 cells using METTL18 antibody (25553-1-AP) at dilution of 1:400 and CoraLite® 488-Conjugated Goat Anti-Rabbit IgG(H+L) (SA00013-2).