

For Research Use Only

LIX1L Polyclonal antibody

Catalog Number: 25557-1-AP



Basic Information

Catalog Number: 25557-1-AP	GenBank Accession Number: BC035727	Purification Method: Antigen affinity purification
Size: 150ul , Concentration: 850 ug/ml by Nanodrop;	GeneID (NCBI): 128077	Recommended Dilutions: WB 1:500-1:2000 IF/ICC 1:200-1:800
Source: Rabbit	UNIPROT ID: Q8IVB5	
Isotype: IgG	Full Name: Lix1 homolog (mouse)-like	
Immunogen Catalog Number: AG22209	Calculated MW: 337 aa, 37 kDa	
	Observed MW: 35-40 kDa	

Applications

Tested Applications: WB, IF/ICC, ELISA	Positive Controls:
Species Specificity: human	WB : HeLa cells, Jurkat cells, SH-SY5Y cells IF/ICC : K-562 cells,

Background Information

Limb expression 1-like protein (LIX1L) is a putative RNA binding protein that contains a double-stranded RNA-binding motif. LIX1L is highly expressed in various cancer tissues.

Storage

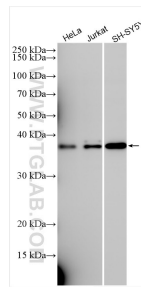
Storage:
Store at -20°C. Stable for one year after shipment.
Storage Buffer:
PBS with 0.02% sodium azide and 50% glycerol pH 7.3.
Aliquoting is unnecessary for -20°C storage

*** 20ul sizes contain 0.1% BSA

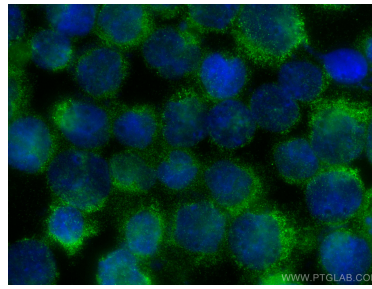
For technical support and original validation data for this product please contact:
T: 1 (888) 4PTGLAB (1-888-478-4522) (toll free in USA), or 1(312) 455-8498 (outside USA)
E: proteintech@ptglab.com
W: ptglab.com

This product is exclusively available under Proteintech Group brand and is not available to purchase from any other manufacturer.

Selected Validation Data



Various lysates were subjected to SDS PAGE followed by western blot with 25557-1-AP (LIX1L antibody) at dilution of 1:1000 incubated at room temperature for 1.5 hours.



Immunofluorescent analysis of (4% PFA) fixed K-562 cells using LIX1L antibody (25557-1-AP) at dilution of 1:400 and CoraLite®488-Conjugated Goat Anti-Rabbit IgG(H+L).