

For Research Use Only

ARMC6 Polyclonal antibody, PBS Only

Catalog Number: 25558-1-PBS



Basic Information

Catalog Number: 25558-1-PBS	GenBank Accession Number: BC067125	Purification Method: Antigen affinity purification
Size: 100ug, Concentration: 1 mg/ml by Nanodrop;	GeneID (NCBI): 93436	
Source: Rabbit	UNIPROT ID: Q6NXX6	
Isotype: IgG	Full Name: armadillo repeat containing 6	
Immunogen Catalog Number: AG22278	Calculated MW: 501 aa, 54 kDa	
	Observed MW: 40-50 kDa	

Applications

Tested Applications:
WB, Indirect ELISA

Species Specificity:
human

Background Information

ARMC6 (Armadillo repeat-containing protein 6) is a Protein Coding gene. Diseases associated with ARMC6 include Leber Congenital Amaurosis 1. The function of this gene's protein product has not been determined.

Storage

Storage:
Store at -80°C.

Storage Buffer:
PBS only, pH7.3

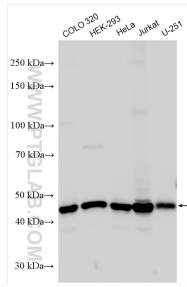
For technical support and original validation data for this product please contact:

T: 1 (888) 4PTGLAB (1-888-478-4522) (toll free
in USA), or 1(312) 455-8498 (outside USA)

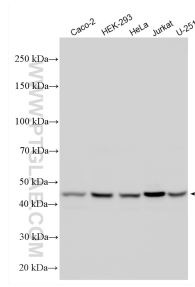
E: proteintech@ptglab.com
W: ptglab.com

This product is exclusively available under Proteintech Group brand and is not available to purchase from any other manufacturer.

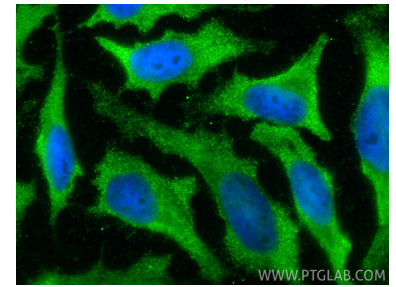
Selected Validation Data



Various lysates were subjected to SDS PAGE followed by western blot with 25558-1-AP (ARMC6 antibody) at dilution of 1:2000 incubated at room temperature for 1.5 hours. This data was developed using the same antibody clone with 25558-1-PBS in a different storage buffer formulation.



Various lysates were subjected to SDS PAGE followed by western blot with 25558-1-AP (ARMC6 antibody) at dilution of 1:20000 incubated at room temperature for 1.5 hours. This data was developed using the same antibody clone with 25558-1-PBS in a different storage buffer formulation.



Immunofluorescent analysis of (-20°C Ethanol) fixed HeLa cells using ARMC6 antibody (25558-1-AP) at dilution of 1:200 and CoraLite®488-Conjugated Goat Anti-Rabbit IgG(H+L) (SA00013-2). This data was developed using the same antibody clone with 25558-1-PBS in a different storage buffer formulation.